



ELECTRONIC COPY

LABORATORY GROWN DIAMOND REPORT

July 25, 2025	
IGI Report Number	LG723545765
Description	LABORATORY GROWN DIAMOND
Shape and Cutting Style	CUSHION MODIFIED BRILLIANT
Measurements	7.79 X 7.59 X 4.97 MM

GRADING RESULTS

Carat Weight	2.53 CARATS
Color Grade	E
Clarity Grade	VVS 2

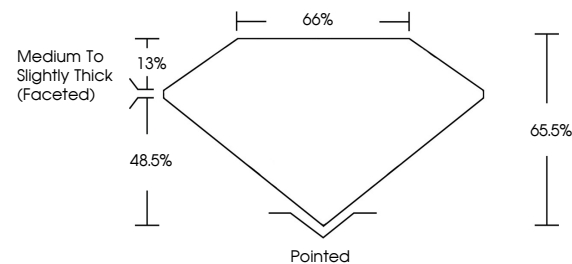
ADDITIONAL GRADING INFORMATION

Polish	EXCELLENT
Symmetry	EXCELLENT
Fluorescence	NONE
Inscription(s)	 LG723545765

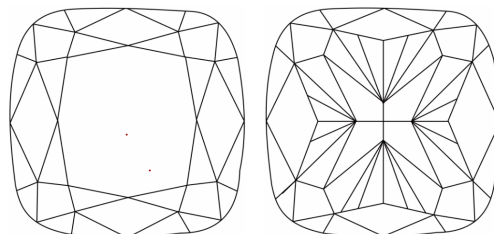
Comments: This Laboratory Grown Diamond was created by Chemical Vapor Deposition (CVD) growth process.
Type IIa

LG723545765
Report verification at igi.org

PROPORTIONS

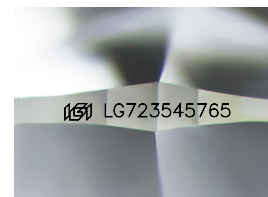


CLARITY CHARACTERISTICS



KEY TO SYMBOLS

Red symbols indicate internal characteristics.
Green symbols indicate external characteristics.



Sample Image Used

COLOR

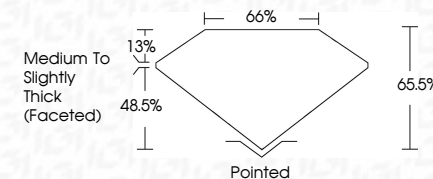
D E F G H I J Faint Very Light Light

CLARITY

IF	VS ¹⁻²	VS ¹⁻²	SI ¹⁻²	I ¹⁻³
Internally Flawless	Very Very Slightly Included	Very Slightly Included	Slightly Included	Included



July 25, 2025	
IGI Report Number	LG723545765
Description	LABORATORY GROWN DIAMOND
Shape and Cutting Style	CUSHION MODIFIED BRILLIANT
Measurements	7.79 X 7.59 X 4.97 MM
GRADING RESULTS	
Carat Weight	2.53 CARATS
Color Grade	E
Clarity Grade	VVS 2



ADDITIONAL GRADING INFORMATION

Polish	EXCELLENT
Symmetry	EXCELLENT
Fluorescence	NONE
Inscription(s)	 LG723545765
<p>Comments: This Laboratory Grown Diamond was created by Chemical Vapor Deposition (CVD) growth process.</p> <p>Type IIa</p>	



www.igi.org

© IGI 2020, International Gemological Institute

FD - 10 20



THIS DOCUMENT WAS PRODUCED WITH THE FOLLOWING SECURITY MEASURES: SPECIAL DOCUMENT PAPER, INK SCREENS, WATERMARK, BACKGROUND DESIGNS, HOLOGRAM AND OTHER SECURITY FEATURES NOT LISTED AND DO EXCEED DOCUMENT SECURITY INDUSTRY GUIDELINE

July 25, 2025
 CGI Report No LG723545765
 DIVISION MODIFIED BRILLIANT

7.79 X 7.69 X .457 MM	2.63 CARATS
Carat Weight	E
Color Grade	VVS 2
Clarity Grade	66.6%
Depth	66.6%
Table	Medium To Slightly Thick (rounded)
Girdle	Pointed
Fluorescence	EXCELLENT
Symmetry	EXCELLENT
Polish	NONE
Measurements	7.79 X 7.69 X .457 MM

Comments:
This Laboratory Grown Diamond was created by Chemical Vapor Deposition (CVD) growth process.