



ELECTRONIC COPY

LG723545542
Report verification at igi.org



July 25, 2025

IGI Report Number **LG723545542**

Description **LABORATORY GROWN DIAMOND**

Shape and Cutting Style **PEAR BRILLIANT**

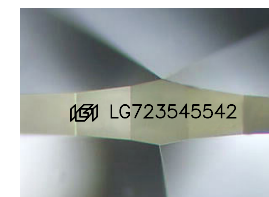
Measurements **11.34 X 7.14 X 4.40 MM**

GRADING RESULTS

Carat Weight **2.18 CARATS**

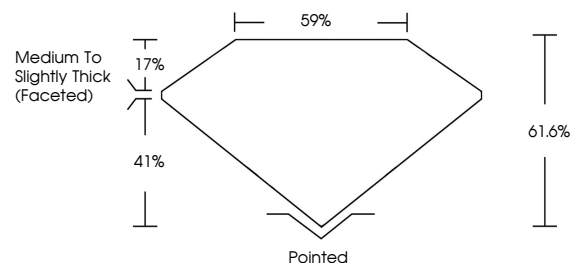
Color Grade **D**

Clarity Grade **VVS 1**

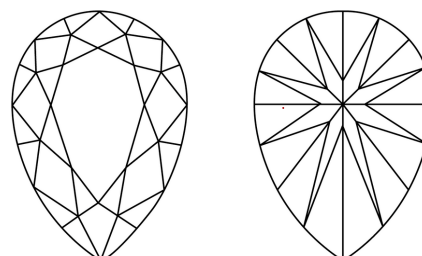


Sample Image Used

PROPORTIONS



CLARITY CHARACTERISTICS



KEY TO SYMBOLS

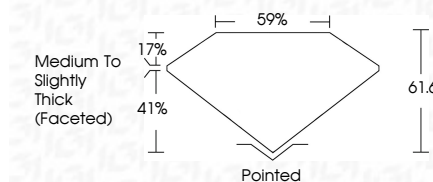
Red symbols indicate internal characteristics.
Green symbols indicate external characteristics.

COLOR

D E F G H I J Faint Very Light Light

CLARITY

IF	VS ¹⁻²	VS ¹⁻²	SI ¹⁻²	I ¹⁻³
Internally Flawless	Very Very Slightly Included	Very Slightly Included	Slightly Included	Included



ADDITIONAL GRADING INFORMATION

Polish **EXCELLENT**

Symmetry **EXCELLENT**

Fluorescence **NONE**

Inscription(s) **IGI LG723545542**

Comments: This Laboratory Grown Diamond was created by Chemical Vapor Deposition (CVD) growth process. Type IIa



IGI



July 25, 2025
IGI Report No LG723545542
PEAR BRILLIANT

11.34 X 7.14 X 4.40 MM

2.18 CARATS
D

Carat Weight
Color Grade
Clarity Grade
Table
Girdle
Medium to Slightly Thick (Faceted)

VS 1
61.6%
59%

Pointed
EXCELLENT
EXCELLENT
NONE
IGI LG723545542

Culet
Polish
Symmetry
Fluorescence
Inscription(s)

Comments: This Laboratory Grown Diamond was created by Chemical Vapor Deposition (CVD) growth process. Type IIa