

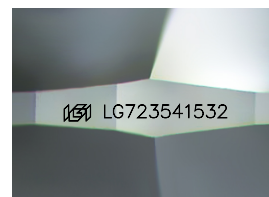
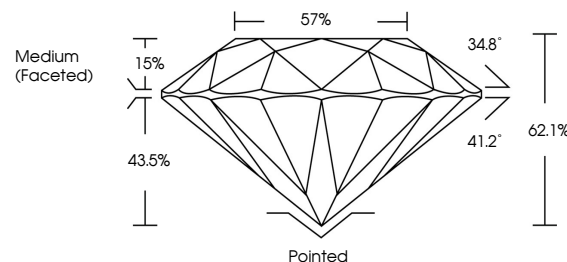


ELECTRONIC COPY

LABORATORY GROWN DIAMOND REPORT

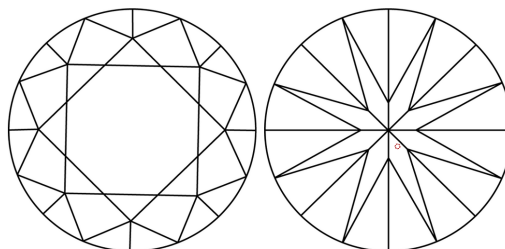
LG723541532
Report verification at lgi.org

PROPORTIONS



Sample Image Used

CLARITY CHARACTERISTICS



KEY TO SYMBOLS

Red symbols indicate internal characteristics.
Green symbols indicate external characteristics.

COLOR

D E F G H I J Faint Very Light Light

CLARITY

IF WS¹⁻² VS¹⁻² S¹⁻² |¹⁻³

Internally Flawless	Very Very Slightly Included	Very Slightly Included	Slightly Included	Included
------------------------	--------------------------------	---------------------------	----------------------	----------



© IGI 2020, International Gemological Institute

FD - 10 20

www.igi.org

LABORATORY GROWN DIAMOND REPORT



July 26, 2025

IGI Report Number **LG723541532**

Description	LABORATORY GROWN DIAMOND
-------------	--------------------------

Shape and Cutting Style **ROUND BRILLIANT**

Measurements 8.50 - 8.57 X 5.31 MM

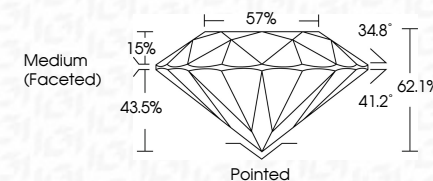
GRADING RESULTS

Carat Weight **2.36 CARATS**

Color Grade E

Clarity Grade **VVS 1**

Cut Grade **IDEAL**



ADDITIONAL GRADING INFORMATION

Polish **EXCELLENT**Symmetry **EXCELLENT**Fluorescence **NONE**Inscription(s) LG723541532

Comments: As Grown - No indication of post-growth treatment.

This Laboratory Grown Diamond was created by High Pressure High Temperature (HPHT) growth process.
Type II



July 26, 2005	2.36 CARATS	WVS 1	Painted	No Growth - No Indication of post-growth treatment. This Laboratory Grown Diamond was created by High Pressure High Temperature (HPHT) growth process.
G Report No. LG728411532	E	IDEAL	EXCELLENT	
ROUND BRILLIANT	Color Grade	62.1%	NONE	
8.60 - 8.57 X 5.31 MM	Clarity Grade	57%	189 LG728411532	
	Carat Weight	Medium (Faceted)		
		Depth	Fluorescence	
		Table	Symmetry	
		Girdle	Culet	