

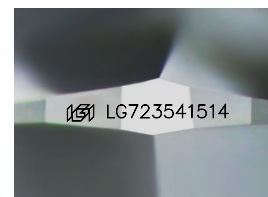
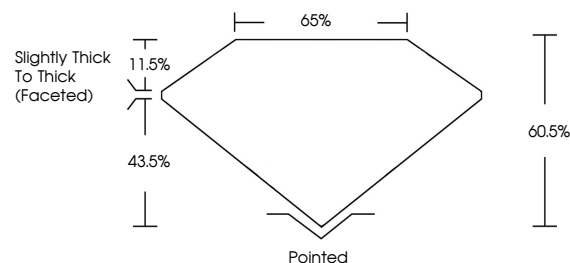


**ELECTRONIC COPY**

## LABORATORY GROWN DIAMOND REPORT

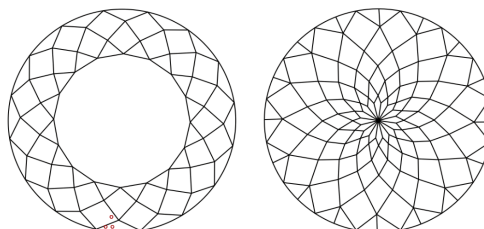
LG723541514  
Report verification at [igi.org](https://igi.org)

## PROPORTIONS



Sample Image Used

## CLARITY CHARACTERISTICS



## KEY TO SYMBOLS

Red symbols indicate internal characteristics.  
Green symbols indicate external characteristics.

## COLOR

D E F G H I J Faint Very Light Light

## CLARITY

IF      VWS<sup>1-2</sup>      VS<sup>1-2</sup>      SI<sup>1-2</sup>      I<sup>1-3</sup>

| Internally<br>Flawless | Very Very<br>Slightly Included | Very<br>Slightly Included | Slightly<br>Included | Included |
|------------------------|--------------------------------|---------------------------|----------------------|----------|
|------------------------|--------------------------------|---------------------------|----------------------|----------|

## LABORATORY GROWN DIAMOND REPORT



July 26, 2025

IGI Report Number **LG723541514**Description **LABORATORY GROWN DIAMOND**Shape and Cutting Style **ROUND MODIFIED BRILLIANT**

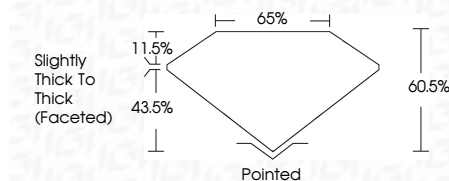
Measurements 7.77 - 7.79 X 4.71 MM

## GRADING RESULTS

Carat Weight **2.01 CARATS**

Color Grade D

Clarity Grade VS 1



### ADDITIONAL GRADING INFORMATION

Polish **EXCELLENT**Symmetry **EXCELLENT**Fluorescence **NONE**Inscription(s)  LG723541514

Comments: This Laboratory Grown Diamond was created by Chemical Vapor Deposition (CVD) growth process.  
Type IIa



© IGI 2020, International Gemological Institute

FD - 10 20



THIS DOCUMENT WAS PRODUCED WITH THE FOLLOWING SECURITY MEASURES: SPECIAL DOCUMENT PAPER, INK SCREENS, WATERMARK, BACKGROUND DESIGNS, HOLOGRAM, AND OTHER SECURITY FEATURES NOT LISTED AND DO EXCEED DOCUMENT SECURITY INDUSTRY GUIDELINES.

**www.igi.org**

July 26, 2025  
 EGI Report No. L  
 FOUND MODERATE

|                                  |  |                    |       |
|----------------------------------|--|--------------------|-------|
| <b>1.77 - 7.79 X 4.71 MM</b>     |  | <b>2.01 CARATS</b> |       |
| Carat Weight                     |  | Color Grade        | D     |
| Depth                            |  | Clarity Grade      | VS 1  |
| Table                            |  |                    | 60.5% |
| Girdle                           |  |                    | 65%   |
| Slightly Thick to Thick (graded) |  |                    |       |
| Culet                            |  | Pointed            |       |
| Polish                           |  | EXCELLENT          |       |
| Symmetry                         |  | EXCELLENT          |       |
| Fluorescence                     |  | NONE               |       |
| 100% Natural                     |  | GIA #279524154     |       |

**Comments:**  
This Laboratory Grown Diamond was  
created by Chemical Vapor Deposition  
(CVD) growth process.