



**ELECTRONIC COPY**

LG723538580  
Report verification at [igi.org](http://igi.org)



July 17, 2025  
IGI Report Number **LG723538580**  
Description **LABORATORY GROWN DIAMOND**  
Shape and Cutting Style **MODIFIED DECAGONAL STEP CUT**  
Measurements **12.09 X 7.55 X 3.69 MM**  
**GRADING RESULTS**  
Carat Weight **2.09 CARATS**  
Color Grade **E**  
Clarity Grade **VVS 2**

**LABORATORY GROWN DIAMOND REPORT**

July 17, 2025  
IGI Report Number **LG723538580**  
Description **LABORATORY GROWN DIAMOND**  
Shape and Cutting Style **MODIFIED DECAGONAL STEP CUT**  
Measurements **12.09 X 7.55 X 3.69 MM**

**GRADING RESULTS**

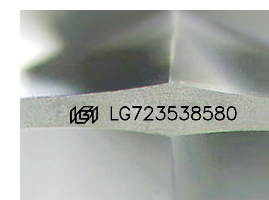
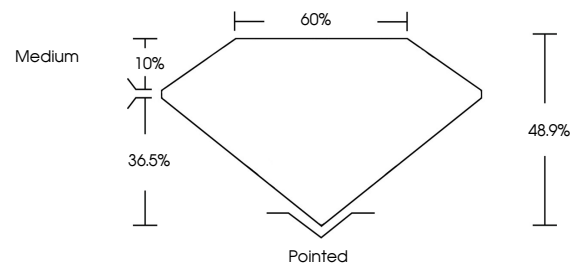
Carat Weight **2.09 CARATS**  
Color Grade **E**  
Clarity Grade **VVS 2**

**ADDITIONAL GRADING INFORMATION**

Polish **EXCELLENT**  
Symmetry **EXCELLENT**  
Fluorescence **NONE**  
Inscription(s) **IGI LG723538580**

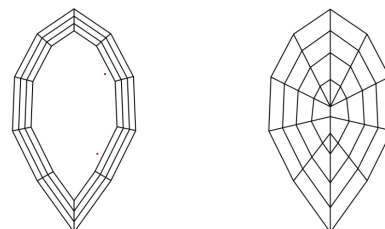
Comments: This Laboratory Grown Diamond was created by Chemical Vapor Deposition (CVD) growth process.  
Type IIa

**PROPORTIONS**



Sample Image Used

**CLARITY CHARACTERISTICS**



**KEY TO SYMBOLS**

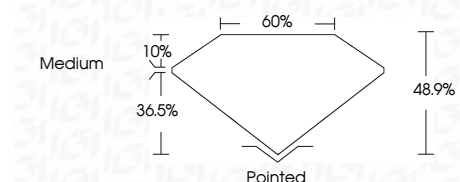
Red symbols indicate internal characteristics.  
Green symbols indicate external characteristics.

**COLOR**

D E F G H I J Faint Very Light Light

**CLARITY**

IF	VS <sup>1-2</sup>	VS <sup>1-2</sup>	SI <sup>1-2</sup>	I <sup>1-3</sup>
Internally Flawless	Very Very Slightly Included	Very Slightly Included	Slightly Included	Included



**ADDITIONAL GRADING INFORMATION**

Polish **EXCELLENT**  
Symmetry **EXCELLENT**  
Fluorescence **NONE**  
Inscription(s) **IGI LG723538580**  
Comments: This Laboratory Grown Diamond was created by Chemical Vapor Deposition (CVD) growth process.  
Type IIa



July 17, 2025  
IGI Report No LG723538580  
MODIFIED DECAGONAL STEP CUT  
2.09 CARATS  
E  
2.09 CARATS  
E  
48.9%  
36.5%  
Medium  
Pointed  
EXCELLENT  
EXCELLENT  
NONE  
IGI LG723538580  
Comments: This Laboratory Grown Diamond was created by Chemical Vapor Deposition (CVD) growth process.  
Type IIa