



LABORATORY GROWN DIAMOND REPORT

July 23, 2025
 IGI Report Number **LG723535019**
 Description **LABORATORY GROWN DIAMOND**
 Shape and Cutting Style **ROUND BRILLIANT**
 Measurements **3.95 - 3.97 X 2.49 MM**

GRADING RESULTS

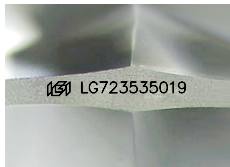
Carat Weight **0.24 CARAT**
 Color Grade **FANCY VIVID BLUE**
 Clarity Grade **VS 2**
 Cut Grade **EXCELLENT**

ADDITIONAL GRADING INFORMATION

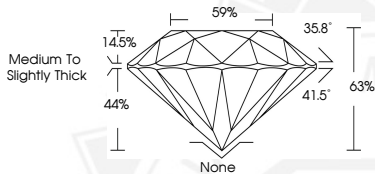
Polish **VERY GOOD**
 Symmetry **VERY GOOD**
 Fluorescence **NONE**
 Inscription(s) **IGI LG723535019**

Comments: This Laboratory Grown Diamond was created by Chemical Vapor Deposition (CVD) growth process. Indications of post-growth treatment.

Secondary color: Green



Sample Image Used



July 23, 2025
 IGI Report Number **LG723535019**
 ROUND BRILLIANT
 LABORATORY GROWN DIAMOND
 3.95 - 3.97 X 2.49 MM
 Carat Weight **0.24 CARAT**
 Color Grade **FANCY VIVID BLUE**
 Clarity Grade **VS 2**
 Cut Grade **EXCELLENT**
 Polish **VERY GOOD**
 Symmetry **VERY GOOD**
 Fluorescence **NONE**
 Inscription(s) **IGI LG723535019**
 Comments: This Laboratory Grown Diamond was created by Chemical Vapor Deposition (CVD) growth process. Indications of post-growth treatment. Secondary color: Green



July 23, 2025
 IGI Report Number **LG723535019**
 ROUND BRILLIANT
 LABORATORY GROWN DIAMOND
 3.95 - 3.97 X 2.49 MM
 Carat Weight **0.24 CARAT**
 Color Grade **FANCY VIVID BLUE**
 Clarity Grade **VS 2**
 Cut Grade **EXCELLENT**
 Polish **VERY GOOD**
 Symmetry **VERY GOOD**
 Fluorescence **NONE**
 Inscription(s) **IGI LG723535019**
 Comments: This Laboratory Grown Diamond was created by Chemical Vapor Deposition (CVD) growth process. Indications of post-growth treatment. Secondary color: Green

THIS DOCUMENT WAS PRODUCED WITH THE FOLLOWING SECURITY MEASURES: SPECIAL DOCUMENT PAPER, INK SCREENS, WATERMARK, BACKGROUND DESIGNS, HOLOGRAM AND OTHER SECURITY FEATURES NOT LISTED AND DO EXCEED DOCUMENT SECURITY INDUSTRY GUIDELINES.

For terms & conditions and to verify this report, please visit www.igi.org