



**ELECTRONIC COPY**

LG723533633  
Report verification at igi.org



July 16, 2025

IGI Report Number **LG723533633**

Description **LABORATORY GROWN DIAMOND**

Shape and Cutting Style **PRINCESS CUT**

Measurements **7.02 X 6.93 X 4.85 MM**

**GRADING RESULTS**

Carat Weight **2.07 CARATS**

Color Grade **D**

Clarity Grade **VVS 1**

July 16, 2025  
IGI Report Number **LG723533633**  
Description **LABORATORY GROWN DIAMOND**  
Shape and Cutting Style **PRINCESS CUT**  
Measurements **7.02 X 6.93 X 4.85 MM**

**GRADING RESULTS**

Carat Weight **2.07 CARATS**

Color Grade **D**

Clarity Grade **VVS 1**

**ADDITIONAL GRADING INFORMATION**

Polish **EXCELLENT**

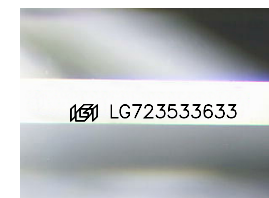
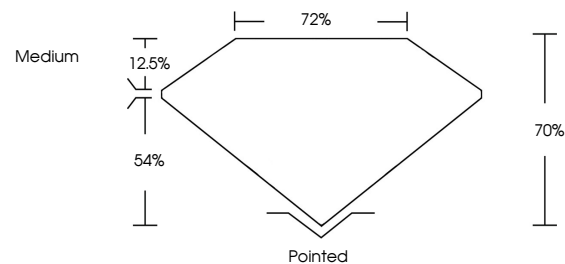
Symmetry **EXCELLENT**

Fluorescence **NONE**

Inscription(s) **IGI LG723533633**

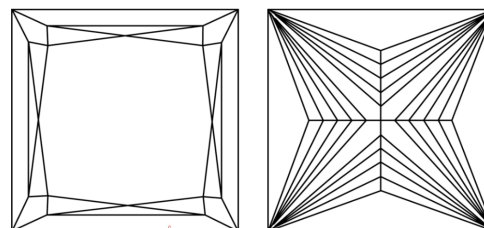
Comments: This Laboratory Grown Diamond was created by Chemical Vapor Deposition (CVD) growth process. Type IIa

**PROPORTIONS**



Sample Image Used

**CLARITY CHARACTERISTICS**



**KEY TO SYMBOLS**

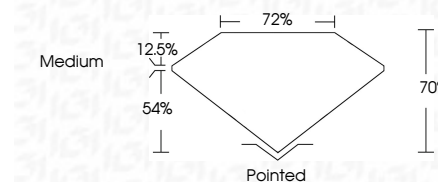
Red symbols indicate internal characteristics.  
Green symbols indicate external characteristics.

**COLOR**

D E F G H I J Faint Very Light Light

**CLARITY**

IF	VS <sup>1-2</sup>	VS <sup>1-2</sup>	SI <sup>1-2</sup>	I <sup>1-3</sup>
Internally Flawless	Very Very Slightly Included	Very Slightly Included	Slightly Included	Included



**ADDITIONAL GRADING INFORMATION**

Polish **EXCELLENT**

Symmetry **EXCELLENT**

Fluorescence **NONE**

Inscription(s) **IGI LG723533633**

Comments: This Laboratory Grown Diamond was created by Chemical Vapor Deposition (CVD) growth process. Type IIa



**IGI**



July 16, 2025  
IGI Report No LG723533633  
**PRINCESS CUT**  
7.02 X 6.93 X 4.85 MM  
2.07 CARATS  
D  
Color Grade  
VVS 1  
Depth 70%  
Table 72%  
Girdle Medium  
Pointed  
Culet  
Polish EXCELLENT  
Symmetry EXCELLENT  
Fluorescence NONE  
Inscription(s) IGI LG723533633  
Comments: This Laboratory Grown Diamond was created by Chemical Vapor Deposition (CVD) growth process. Type IIa