



ELECTRONIC COPY

LG723532822
Report verification at igi.org



July 24, 2025
IGI Report Number **LG723532822**
Description **LABORATORY GROWN DIAMOND**
Shape and Cutting Style **CUT CORNERED
RECTANGULAR MODIFIED
BRILLIANT**
Measurements **8.02 X 5.70 X 3.70 MM**
GRADING RESULTS
Carat Weight **1.56 CARAT**
Color Grade **FANCY VIVID BROWNISH
PINK**
Clarity Grade **VVS 2**

LABORATORY GROWN DIAMOND REPORT

July 24, 2025
IGI Report Number **LG723532822**
Description **LABORATORY GROWN DIAMOND**
Shape and Cutting Style **CUT CORNERED RECTANGULAR
MODIFIED BRILLIANT**
Measurements **8.02 X 5.70 X 3.70 MM**

GRADING RESULTS

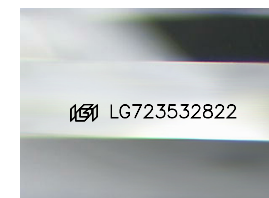
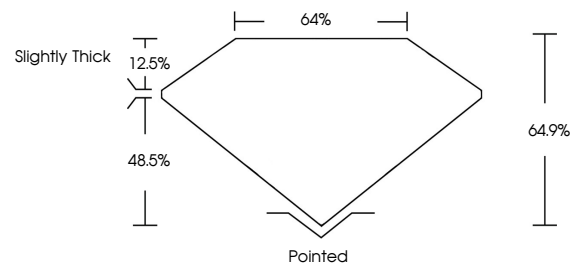
Carat Weight **1.56 CARAT**
Color Grade **FANCY VIVID BROWNISH PINK**
Clarity Grade **VVS 2**

ADDITIONAL GRADING INFORMATION

Polish **EXCELLENT**
Symmetry **EXCELLENT**
Fluorescence **STRONG**
Inscription(s) **IGI LG723532822**

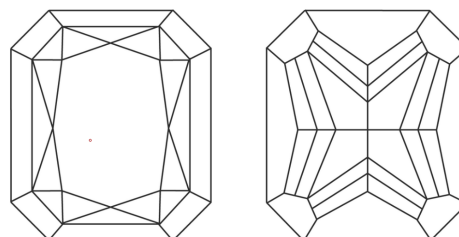
Comments: This Laboratory Grown Diamond was created by Chemical Vapor Deposition (CVD) growth process. Indications of post-growth treatment.

PROPORTIONS



Sample Image Used

CLARITY CHARACTERISTICS



KEY TO SYMBOLS

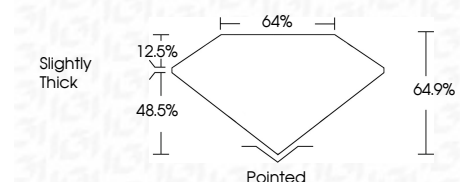
Red symbols indicate internal characteristics.
Green symbols indicate external characteristics.

COLOR

D E F G H I J Faint Very Light Light

CLARITY

IF	VS ¹⁻²	VVS ¹⁻²	S ¹⁻²	I ¹⁻³
Internally Flawless	Very Very Slightly Included	Very Slightly Included	Slightly Included	Included



ADDITIONAL GRADING INFORMATION

Polish **EXCELLENT**
Symmetry **EXCELLENT**
Fluorescence **STRONG**
Inscription(s) **IGI LG723532822**
Comments: This Laboratory Grown Diamond was created by Chemical Vapor Deposition (CVD) growth process. Indications of post-growth treatment.



July 24, 2025
IGI Report No LG723532822
CUT CORNERED RECT. MODIFIED BRILLIANT
8.02 X 5.70 X 3.70 MM
1.56 CARAT
FANCY VIVID BROWNISH PINK
Color Grade
VVS 2
64.9%
48.5%
12.5%
Slightly Thick
Pointed
EXCELLENT
EXCELLENT
STRONG
IGI LG723532822
Comments: This Laboratory Grown Diamond was created by Chemical Vapor Deposition (CVD) growth process. Indications of post-growth treatment.