

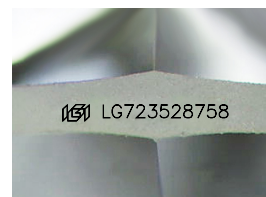
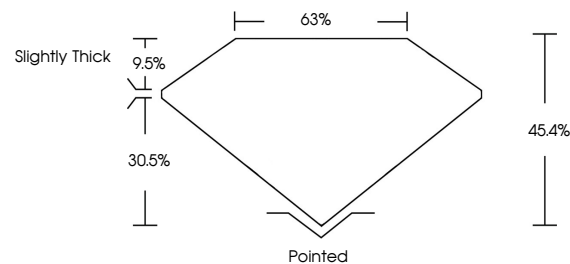


**ELECTRONIC COPY**

## LABORATORY GROWN DIAMOND REPORT

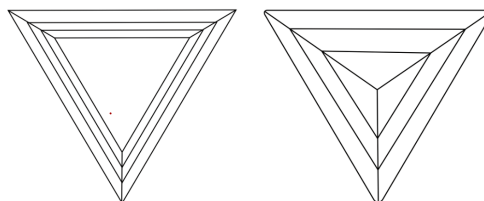
LG723528758  
Report verification at [igi.org](https://igi.org)

## PROPORTIONS



Sample Image Used

## CLARITY CHARACTERISTICS



## KEY TO SYMBOLS

Red symbols indicate internal characteristics.  
Green symbols indicate external characteristics.

## COLOR

D E F G H I J Faint Very Light Light

## CLARITY

IF      VWS<sup>1-2</sup>      VS<sup>1-2</sup>      SI<sup>1-2</sup>      I<sup>1-3</sup>

Internally Flawless	Very Very Slightly Included	Very Slightly Included	Slightly Included	Included
------------------------	--------------------------------	---------------------------	----------------------	----------

## LABORATORY GROWN DIAMOND REPORT



July 21, 2025

IGI Report Number **LG723528758**

Description	LABORATORY GROWN DIAMOND
-------------	--------------------------

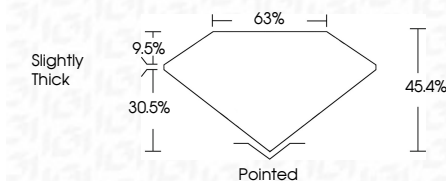
Shape and Cutting Style **TRIANGULAR MIXED CUT**

Measurements **7.06 X 8.23 X 3.74 MM**

## GRADING RESULTS

Carat Weight 1.08 CARAT

Color Grade	D
-------------	---

Clarity Grade **VVS 2**

### ADDITIONAL GRADING INFORMATION

Polish **EXCELLENT**Symmetry **EXCELLENT**Fluorescence **NONE**Inscription(s)  LG723528758

Comments: This Laboratory Grown Diamond was created by Chemical Vapor Deposition (CVD) growth process.  
Type IIa



July 21, 2025  
GI Report No LG723528758  
TRIANGULAR MIXED CUT

1.05 X 0.23 X 3.74 MM	1.08 CARAT	D
Carat Weight	VVS 2	45.4%
Color Grade		68%
Clarity Grade		Slightly Thick
Depth		Pointed
Table		EXCELLENT
Grade		EXCELLENT
		NONE
		4mm (approximate)

**Comments:**  
This Laboratory Grown Diamond was  
created by Chemical Vapor Deposition  
(CVD) growth process.

© IGI 2020, International Gemological Institute

FD - 10 20



THIS DOCUMENT WAS PRODUCED WITH THE FOLLOWING SECURITY MEASURES: SPECIAL DOCUMENT PAPER, INK SCREENS, WATERMARK, BLACK POLYMER DOTS, LINE CODING, AND COLORED SECURITY FIBERS. NO OTHER MARKS, AND NO OTHER DOCUMENTS, SHOULD BE REPRODUCED WITH THESE MEASURES.

**www.igi.org**