



**ELECTRONIC COPY**

LG723527274  
Report verification at igi.org



July 23, 2025

IGI Report Number **LG723527274**

Description **LABORATORY GROWN DIAMOND**

Shape and Cutting Style **MARQUISE BRILLIANT**

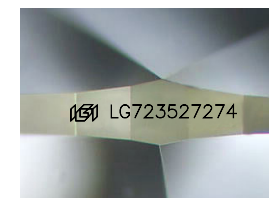
Measurements **16.57 X 8.27 X 5.01 MM**

**GRADING RESULTS**

Carat Weight **4.01 CARATS**

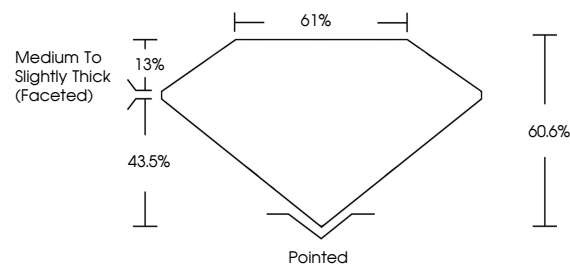
Color Grade **FANCY VIVID PINK**

Clarity Grade **VVS 2**

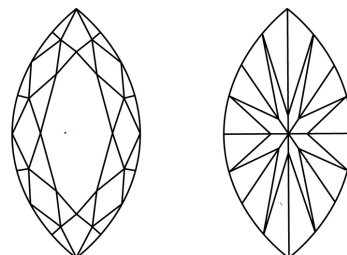


Sample Image Used

**PROPORTIONS**



**CLARITY CHARACTERISTICS**



**KEY TO SYMBOLS**

Red symbols indicate internal characteristics.  
Green symbols indicate external characteristics.

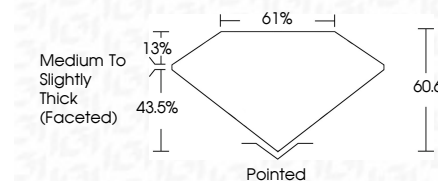
**COLOR**

D E F G H I J Faint Very Light Light

**CLARITY**

IF VS<sup>1-2</sup> VS<sup>1-2</sup> SI<sup>1-2</sup> I<sup>1-3</sup>

Internally Flawless Very Very Slightly Included Very Slightly Included Slightly Included Included



**ADDITIONAL GRADING INFORMATION**

Polish **EXCELLENT**

Symmetry **EXCELLENT**

Fluorescence **STRONG**

Inscription(s) **IGI LG723527274**

Comments: This Laboratory Grown Diamond was created by Chemical Vapor Deposition (CVD) growth process. Indications of post-growth treatment.



July 23, 2025	4.01 CARATS
IGI Report No LG723527274	FANCY VIVID PINK
MARQUISE BRILLIANT	VVS 2
16.57 X 8.27 X 5.01 MM	60.6%
Carat Weight	61%
Color Grade	Medium to Slightly Thick (Faceted)
Clarity Grade	Pointed
Depth	EXCELLENT
Table	EXCELLENT
Grailes	STRONG
Culet	IGI LG723527274
Polish	
Symmetry	
Fluorescence	
Inscription(s)	

Comments: This Laboratory Grown Diamond was created by Chemical Vapor Deposition (CVD) growth process. Indications of post-growth treatment.