



ELECTRONIC COPY

LG723527146 Report verification at igi.org



July 22, 2025 IGI Report Number LG723527146 Description LABORATORY GROWN DIAMOND Shape and Cutting Style ROUND BRILLIANT Measurements 6.64 - 6.66 X 4.06 MM GRADING RESULTS Carat Weight 1.09 CARAT Color Grade FANCY VIVID YELLOW Clarity Grade VS 1 Cut Grade IDEAL

July 22, 2025 IGI Report Number LG723527146 Description LABORATORY GROWN DIAMOND Shape and Cutting Style ROUND BRILLIANT Measurements 6.64 - 6.66 X 4.06 MM

GRADING RESULTS

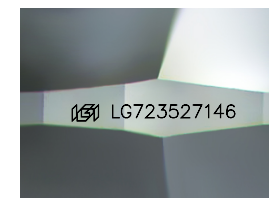
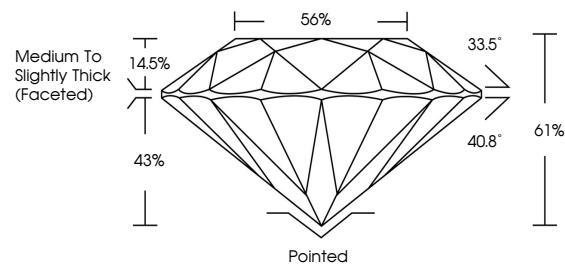
Carat Weight 1.09 CARAT Color Grade FANCY VIVID YELLOW Clarity Grade VS 1 Cut Grade IDEAL

ADDITIONAL GRADING INFORMATION

Polish EXCELLENT Symmetry EXCELLENT Fluorescence NONE Inscription(s) IGI LG723527146

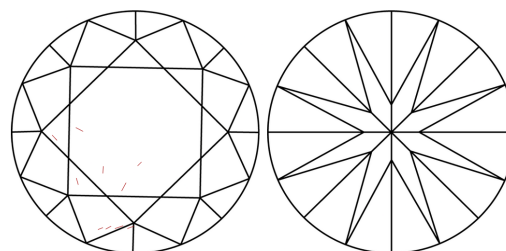
Comments: As Grown - No indication of post-growth treatment. This Laboratory Grown Diamond was created by High Pressure High Temperature (HPHT) growth process.

PROPORTIONS



Sample Image Used

CLARITY CHARACTERISTICS



KEY TO SYMBOLS

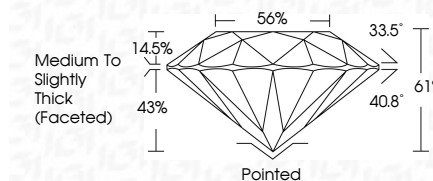
Red symbols indicate internal characteristics. Green symbols indicate external characteristics.

COLOR

D E F G H I J Faint Very Light Light

CLARITY

IF WS 1-2 VS 1-2 SI 1-2 I 1-3 Internally Flawless Very Very Slightly Included Very Slightly Included Slightly Included Included



ADDITIONAL GRADING INFORMATION

Polish EXCELLENT Symmetry EXCELLENT Fluorescence NONE Inscription(s) IGI LG723527146 Comments: As Grown - No indication of post-growth treatment. This Laboratory Grown Diamond was created by High Pressure High Temperature (HPHT) growth process.



Summary of report details including date, report number, description, measurements, grading results, and additional information.