



**ELECTRONIC COPY**

## LABORATORY GROWN DIAMOND REPORT

July 17, 2025	
IGI Report Number	LG723518943
Description	LABORATORY GROWN DIAMOND
Shape and Cutting Style	CUT CORNERED SQUARE MODIFIED BRILLIANT
Measurements	6.98 X 6.90 X 4.69 MM

## GRADING RESULTS

Carat Weight	2.00 CARATS
Color Grade	D
Clarity Grade	VVS 2

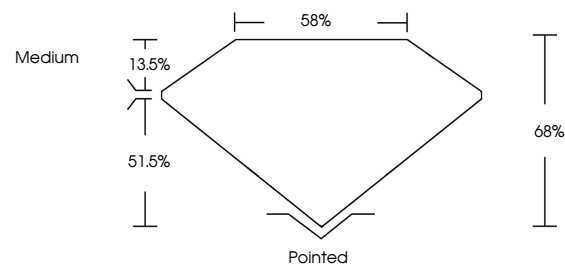
### ADDITIONAL GRADING INFORMATION

Polish	EXCELLENT
Symmetry	EXCELLENT
Fluorescence	NONE
Inscription(s)	 LG723518943

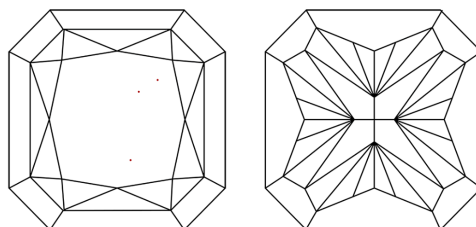
Comments: This Laboratory Grown Diamond was created by Chemical Vapor Deposition (CVD) growth process.  
Type IIa

LG723518943  
Report verification at [igi.org](https://igi.org)

## PROPORTIONS

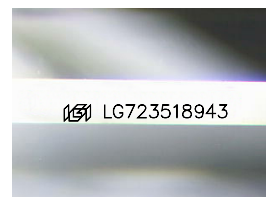


## CLARITY CHARACTERISTICS



## KEY TO SYMBOLS

Red symbols indicate internal characteristics.  
Green symbols indicate external characteristics.



Sample Image Used

## COLOR

D E F G H I J Faint Very Light Light

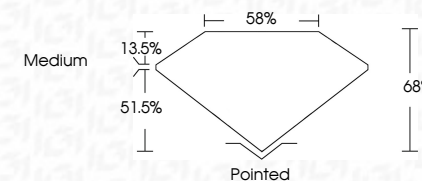
## CLARITY

IF	VS <sup>1-2</sup>	VS <sup>1-2</sup>	SI <sup>1-2</sup>	I <sup>1-3</sup>
Internally Flawless	Very Very Slightly Included	Very Slightly Included	Slightly Included	Included

## LABORATORY GROWN DIAMOND REPORT



July 17, 2025	
IGI Report Number	LG723518943
Description	LABORATORY GROWN DIAMOND
Shape and Cutting Style	CUT CORNERED SQUARE MODIFIED BRILLIANT
Measurements	6.98 X 6.90 X 4.69 MM
GRADING RESULTS	
Carat Weight	2.00 CARATS
Color Grade	D
Clarity Grade	VVS 2



### ADDITIONAL GRADING INFORMATION

Polish	EXCELLENT
Symmetry	EXCELLENT
Fluorescence	NONE
Inscription(s)	 LG723518943
<p>Comments: This Laboratory Grown Diamond was created by Chemical Vapor Deposition (CVD) growth process.</p> <p>Type IIa</p>	



© IGI 2020, International Gemological Institute

FD - 10 20

**www.igi.org**



THIS DOCUMENT WAS PRODUCED WITH THE FOLLOWING SECURITY MEASURES: SPECIAL DOCUMENT PAPER, INK SCREENS, WATERMARK, BACKGROUND DESIGNS, HOLOGRAM AND OTHER SECURITY FEATURES NOT LISTED AND DO EXCEED DOCUMENT SECURITY INDUSTRY GUIDELINE

July 17, 2005	2.00 CARATS	D	VW 2	65%	59%	Medium	Pointed	Excellent	NONE	4641 LG729515043
GI Report No LG729515043										
2CT CORNEAL SLICE MODIFIED										
BRIILLANT										
9.98 X 5.90 X 4.69 MM										
	Carat Weight	Color Grade	Clarity Grade	Depth	Table	Circle	Culet	Polish	Symmetry	Fluorescence

**Comments:**  
This Laboratory Grown Diamond was  
created by Chemical Vapor Deposition  
(CVD) growth process.