



ELECTRONIC COPY

LG723517895
Report verification at igi.org



July 16, 2025

IGI Report Number **LG723517895**

Description **LABORATORY GROWN DIAMOND**

Shape and Cutting Style **EMERALD CUT**

Measurements **10.13 X 6.82 X 4.61 MM**

GRADING RESULTS

Carat Weight **3.12 CARATS**

Color Grade **G**

Clarity Grade **VVS 2**

July 16, 2025

IGI Report Number **LG723517895**

Description **LABORATORY GROWN DIAMOND**

Shape and Cutting Style **EMERALD CUT**

Measurements **10.13 X 6.82 X 4.61 MM**

GRADING RESULTS

Carat Weight **3.12 CARATS**

Color Grade **G**

Clarity Grade **VVS 2**

ADDITIONAL GRADING INFORMATION

Polish **EXCELLENT**

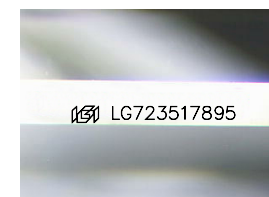
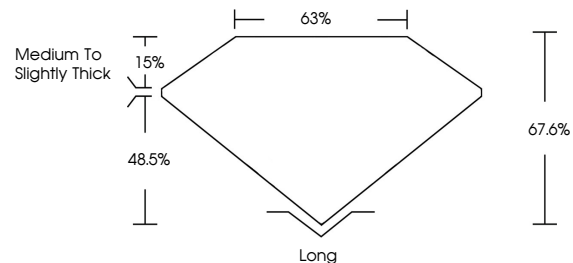
Symmetry **EXCELLENT**

Fluorescence **NONE**

Inscription(s) **IGI LG723517895**

Comments: This Laboratory Grown Diamond was created by Chemical Vapor Deposition (CVD) growth process. Type IIa

PROPORTIONS



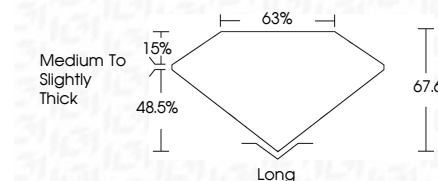
Sample Image Used

COLOR

D E F G H I J Faint Very Light Light

CLARITY

IF	VS ¹⁻²	VS ¹⁻²	SI ¹⁻²	I ¹⁻³
Internally Flawless	Very Very Slightly Included	Very Slightly Included	Slightly Included	Included



ADDITIONAL GRADING INFORMATION

Polish **EXCELLENT**

Symmetry **EXCELLENT**

Fluorescence **NONE**

Inscription(s) **IGI LG723517895**

Comments: This Laboratory Grown Diamond was created by Chemical Vapor Deposition (CVD) growth process. Type IIa



IGI



July 16, 2025
IGI Report No LG723517895
EMERALD CUT
10.13 X 6.82 X 4.61 MM
3.12 CARATS
G
VVS 2
67.6%
63%
Medium to Slightly Thick
Long
EXCELLENT
EXCELLENT
NONE
IGI LG723517895

Comments: This Laboratory Grown Diamond was created by Chemical Vapor Deposition (CVD) growth process. Type IIa