



ELECTRONIC COPY

LG723515913
Report verification at igi.org



July 17, 2025

IGI Report Number LG723515913

Description LABORATORY GROWN DIAMOND

Shape and Cutting Style CUSHION MODIFIED BRILLIANT

Measurements 10.32 X 7.68 X 5.13 MM

GRADING RESULTS

Carat Weight 3.02 CARATS

Color Grade D

Clarity Grade INTERNALLY FLAWLESS

Cut Grade EXCELLENT

LABORATORY GROWN DIAMOND REPORT

July 17, 2025

IGI Report Number LG723515913

Description LABORATORY GROWN DIAMOND

Shape and Cutting Style CUSHION MODIFIED BRILLIANT

Measurements 10.32 X 7.68 X 5.13 MM

GRADING RESULTS

Carat Weight 3.02 CARATS

Color Grade D

Clarity Grade INTERNALLY FLAWLESS

Cut Grade EXCELLENT

ADDITIONAL GRADING INFORMATION

Polish EXCELLENT

Symmetry EXCELLENT

Fluorescence NONE

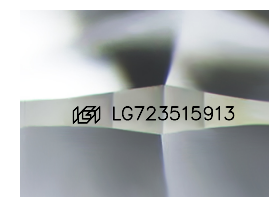
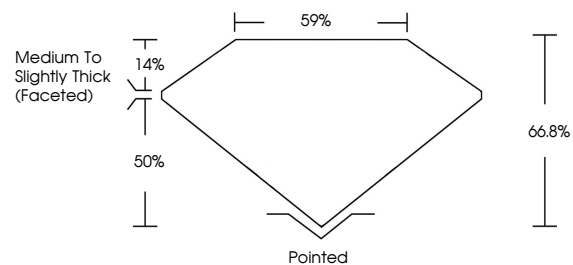
Inscription(s) IGI LG723515913

Comments: As Grown - No indication of post-growth treatment.

This Laboratory Grown Diamond was created by High Pressure High Temperature (HPHT) growth process.

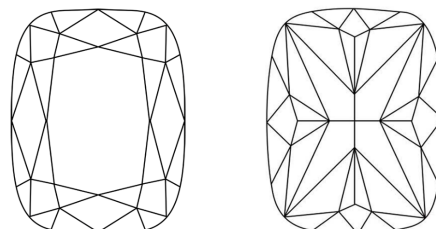
Type II

PROPORTIONS



Sample Image Used

CLARITY CHARACTERISTICS



KEY TO SYMBOLS

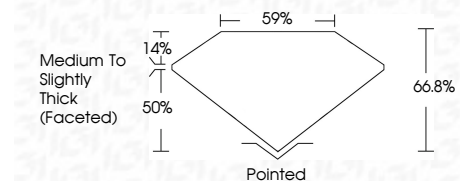
Red symbols indicate internal characteristics. Green symbols indicate external characteristics.

COLOR

D E F G H I J Faint Very Light Light

CLARITY

IF VS 1-2 VS 1-2 SI 1-2 I 1-3 Internally Flawless Very Very Slightly Included Very Slightly Included Slightly Included Included



ADDITIONAL GRADING INFORMATION

Polish EXCELLENT

Symmetry EXCELLENT

Fluorescence NONE

Inscription(s) IGI LG723515913

Comments: As Grown - No indication of post-growth treatment.

This Laboratory Grown Diamond was created by High Pressure High Temperature (HPHT) growth process.

Type II



IGI



Summary of report details including date, report number, description, measurements, grading results, and additional information.