



ELECTRONIC COPY

LABORATORY GROWN DIAMOND REPORT

LG723511574
Report verification at igi.org

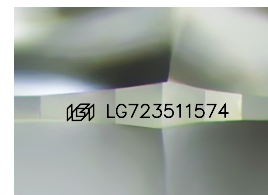
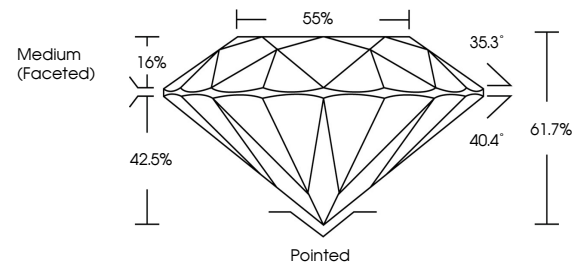
July 17, 2025	
IGI Report Number	LG723511574
Description	LABORATORY GROWN DIAMOND
Shape and Cutting Style	ROUND BRILLIANT
Measurements	9.03 - 9.10 X 5.60 MM
GRADING RESULTS	
Carat Weight	2.84 CARATS
Color Grade	E
Clarity Grade	VVS 2
Cut Grade	IDEAL

ADDITIONAL GRADING INFORMATION

Polish	EXCELLENT
Symmetry	EXCELLENT
Fluorescence	NONE
Inscription(s)	151 LG723511574

Comments: This Laboratory Grown Diamond was created by Chemical Vapor Deposition (CVD) growth process.
Type IIa

PROPORTIONS



Sample Image Used

COLOR

D E F G H I J Faint Very Light Light

CLARITY

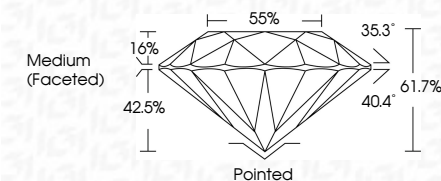
IF VS¹⁻² VS¹⁻² S¹⁻² |¹⁻³

Internally Flawless	Very Very Slightly Included	Very Slightly Included	Slightly Included	Included
------------------------	--------------------------------	---------------------------	----------------------	----------

LABORATORY GROWN DIAMOND REPORT



July 17, 2025	
IGI Report Number	LG723511574
Description	LABORATORY GROWN DIAMOND
Shape and Cutting Style	ROUND BRILLIANT
Measurements	9.03 - 9.10 X 5.60 MM
GRADING RESULTS	
Carat Weight	2.84 CARATS
Color Grade	E
Clarity Grade	VVS 2
Cut Grade	IDEAL



ADDITIONAL GRADING INFORMATION

Polish	EXCELLENT
Symmetry	EXCELLENT
Fluorescence	NONE
Inscription(s)	 LG723511574
Comments: This Laboratory Grown Diamond was created by Chemical Vapor Deposition (CVD) growth process.	
Type IIa	



© IGI 2020, International Gemological Institute

FD - 10 20



THIS DOCUMENT WAS PRODUCED WITH THE FOLLOWING SECURITY MEASURES: SPECIAL DOCUMENT PAPER, INK SCREENS, WATERMARK, BACKGROUND DESIGNS, HOLOGRAM AND OTHER SECURITY FEATURES NOT LISTED AND DO EXCEED DOCUMENT SECURITY INDUSTRY GUIDELINES

www.igi.org

July 17, 2025
GI Report No LG723511574
ROUND BRILLIANT

2.03 - 9.10 X 5.60 MM
Carat Weight 2.84 CARATS

9.00 - 9.10 X 3.00 mm	2.84 CARATS	E
Carat Weight		
Color Grade		

Clarity Grade	VS 2
Out Grade	IDEAL

Depth	61.7%
Table	55%

Girdle **Medium (Faceted)**

	Cullet	Pointed
Polish	EXCELLENT	

Symmetry	Fluorescence	Excitation (nm)	Quantum Yield (%)	Stability
EXCELLENT	NONE	460	100	100

Comments:

This Laboratory Grown Diamond was created by Chemical Vapor Deposition (CVD) growth process.

type IIa