



ELECTRONIC COPY

LG723511033 Report verification at igi.org



July 28, 2025 IGI Report Number LG723511033 Description LABORATORY GROWN DIAMOND Shape and Cutting Style CUT CORNERED RECTANGULAR MODIFIED BRILLIANT Measurements 6.88 X 4.89 X 3.38 MM GRADING RESULTS Carat Weight 1.08 CARAT Color Grade FANCY YELLOW Clarity Grade VVS 2

LABORATORY GROWN DIAMOND REPORT

July 28, 2025 IGI Report Number LG723511033 Description LABORATORY GROWN DIAMOND Shape and Cutting Style CUT CORNERED RECTANGULAR MODIFIED BRILLIANT Measurements 6.88 X 4.89 X 3.38 MM

GRADING RESULTS

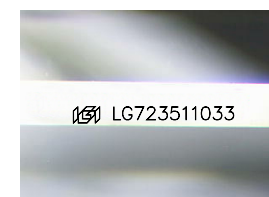
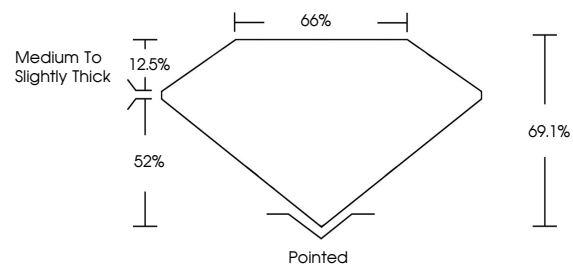
Carat Weight 1.08 CARAT Color Grade FANCY YELLOW Clarity Grade VVS 2

ADDITIONAL GRADING INFORMATION

Polish EXCELLENT Symmetry EXCELLENT Fluorescence NONE Inscription(s) LG723511033

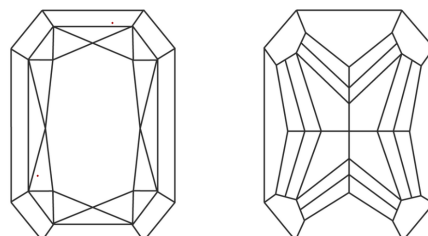
Comments: This Laboratory Grown Diamond was created by Chemical Vapor Deposition (CVD) growth process.

PROPORTIONS



Sample Image Used

CLARITY CHARACTERISTICS



KEY TO SYMBOLS

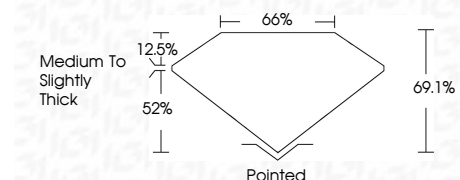
Red symbols indicate internal characteristics. Green symbols indicate external characteristics.

COLOR

D E F G H I J Faint Very Light Light

CLARITY

IF VS 1-2 VS 1-2 SI 1-2 I 1-3 Internally Flawless Very Very Slightly Included Very Slightly Included Slightly Included Included



ADDITIONAL GRADING INFORMATION

Polish EXCELLENT Symmetry EXCELLENT Fluorescence NONE Inscription(s) LG723511033 Comments: This Laboratory Grown Diamond was created by Chemical Vapor Deposition (CVD) growth process.



July 28, 2025 IGI Report No LG723511033 CUT CORNERED RECT. MODIFIED BRILLIANT 6.88 X 4.89 X 3.38 MM 1.08 CARAT FANCY YELLOW VVS 2 69.1% 65% Medium to Slightly Thick Pointed EXCELLENT EXCELLENT NONE NONE LG723511033 Comments: This Laboratory Grown Diamond was created by Chemical Vapor Deposition (CVD) growth process.