

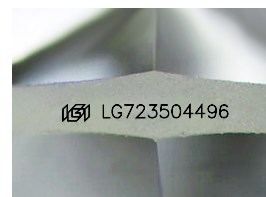
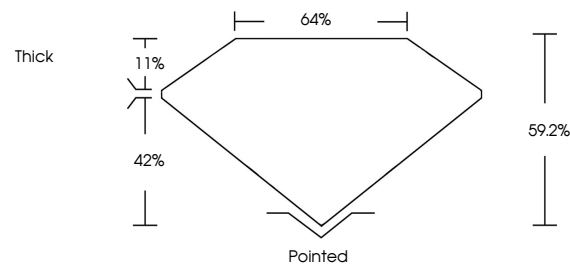


ELECTRONIC COPY

LABORATORY GROWN DIAMOND REPORT

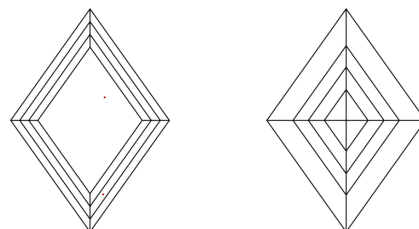
LG723504496
Report verification at igi.org

PROPORTIONS



Sample Image Used

CLARITY CHARACTERISTICS



KEY TO SYMBOLS

Red symbols indicate internal characteristics.
Green symbols indicate external characteristics.

COLOR

D E F G H I J Faint Very Light Light

CLARITY

IF VWS¹⁻² VS¹⁻² SI¹⁻² I¹⁻³

Internally Flawless	Very Very Slightly Included	Very Slightly Included	Slightly Included	Included
------------------------	--------------------------------	---------------------------	----------------------	----------



July 15, 2025

IGI Report Number **LG723504496**

Description	LABORATORY GROWN DIAMOND
-------------	--------------------------

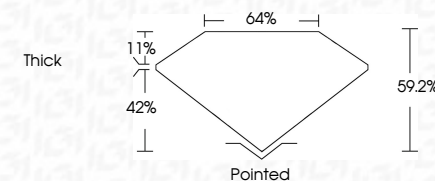
Shape and Cutting Style **LOZENGE STEP CUT**

Measurements 17.18 X 11.15 X 6.60 MM

GRADING RESULTS

Carat Weight **6.29 CARATS**

Color Grade E

Clarity Grade **VVS 2**

ADDITIONAL GRADING INFORMATION

Polish **EXCELLENT**Symmetry **EXCELLENT**Fluorescence **NONE**Inscription(s) LG723504496

Comments: This Laboratory Grown Diamond was created by Chemical Vapor Deposition (CVD) growth process.
Type IIa



© IGI 2020, International Gemological Institute

FD - 10 20



THIS DOCUMENT WAS PRODUCED WITH THE FOLLOWING SECURITY MEASURES: SPECIAL DOCUMENT PAPER, INK SCREENS, WATERMARK, BACKGROUND DESIGNS, HOLOGRAM AND OTHER SECURITY FEATURES NOT LISTED AND DO EXCEED DOCUMENT SECURITY INDUSTRY GUIDELINES

July 15, 2025
GI Report No LG72350496
OZENGE STEP CUT

17/18 X 11/15 X 6/60 MM	Canal Weight	6.29 CARATS
	Color Grade	E
	Clarity Grade	VS 2
	Depth	59.2%
	Table	64%
	Girdle	Thick
	Culet	Pointed
	Polish	EXCELLENT
	Symmetry	EXCELLENT
	Fluorescence	NONE
	Inscriptions(s)	see 1572930495

Comments:
This Laboratory Grown Diamond was created by Chemical Vapor Deposition (CVD) growth process.

www.igi.org