



ELECTRONIC COPY

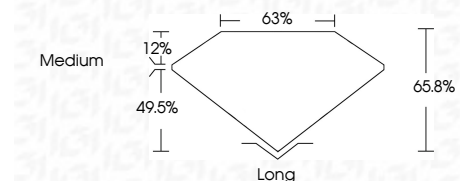
LG722578869 Report verification at igi.org



July 15, 2025 IGI Report Number LG722578869 Description LABORATORY GROWN DIAMOND Shape and Cutting Style EMERALD CUT Measurements 7.43 X 5.14 X 3.38 MM

GRADING RESULTS

Carat Weight 1.28 CARAT Color Grade F Clarity Grade VVS 2



ADDITIONAL GRADING INFORMATION

Polish EXCELLENT Symmetry EXCELLENT Fluorescence NONE Inscription(s) IGI LG722578869 Comments: This Laboratory Grown Diamond was created by Chemical Vapor Deposition (CVD) growth process. Type IIa



July 15, 2025 IGI Report No LG722578869 EMERALD CUT 1.28 CARAT F VVS 2 65.8% 63% Medium Long EXCELLENT EXCELLENT NONE IGI LG722578869 Comments: This Laboratory Grown Diamond was created by Chemical Vapor Deposition (CVD) growth process. Type IIa

LABORATORY GROWN DIAMOND REPORT

July 15, 2025 IGI Report Number LG722578869 Description LABORATORY GROWN DIAMOND Shape and Cutting Style EMERALD CUT Measurements 7.43 X 5.14 X 3.38 MM

GRADING RESULTS

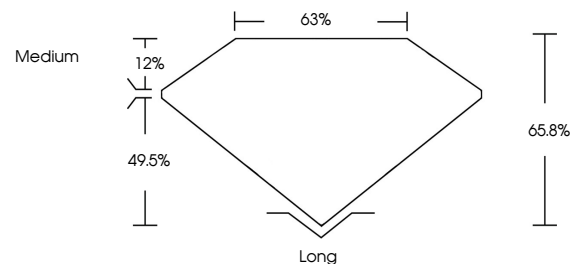
Carat Weight 1.28 CARAT Color Grade F Clarity Grade VVS 2

ADDITIONAL GRADING INFORMATION

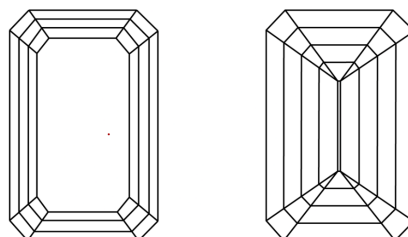
Polish EXCELLENT Symmetry EXCELLENT Fluorescence NONE Inscription(s) IGI LG722578869

Comments: This Laboratory Grown Diamond was created by Chemical Vapor Deposition (CVD) growth process. Type IIa

PROPORTIONS

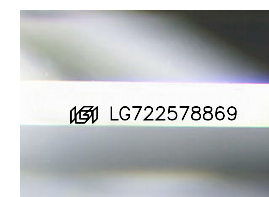


CLARITY CHARACTERISTICS



KEY TO SYMBOLS

Red symbols indicate internal characteristics. Green symbols indicate external characteristics.



Sample Image Used

COLOR

D E F G H I J Faint Very Light Light

CLARITY

IF WS 1-2 VS 1-2 SI 1-2 I 1-3 Internally Flawless Very Very Slightly Included Very Slightly Included Slightly Included Included

