



ELECTRONIC COPY

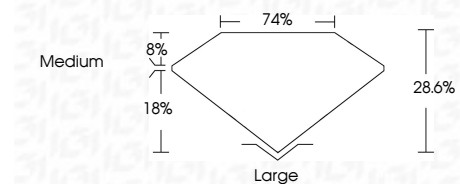
LG722578157
Report verification at igi.org



August 18, 2025
IGI Report Number **LG722578157**
Description **LABORATORY GROWN DIAMOND**

Shape and Cutting Style **SQUARE STEP CUT**
Measurements **12.29 X 11.92 X 3.41 MM**

GRADING RESULTS
Carat Weight **5.56 CARATS**
Color Grade **FANCY INTENSE BLUE**
Clarity Grade **SI 1**



ADDITIONAL GRADING INFORMATION
Polish **EXCELLENT**
Symmetry **EXCELLENT**
Fluorescence **NONE**
Inscription(s) **IGI LG722578157**
Comments: This Laboratory Grown Diamond was created by Chemical Vapor Deposition (CVD) growth process. Indications of post-growth treatment.



August 18, 2025
IGI Report No LG722578157
SQUARE STEP CUT
12.29 X 11.92 X 3.41 MM
5.56 CARATS
FANCY INTENSE BLUE
SI 1
28.6%
74%
Medium
Large
EXCELLENT
EXCELLENT
NONE
IGI LG722578157
Comments: This Laboratory Grown Diamond was created by Chemical Vapor Deposition (CVD) growth process. Indications of post-growth treatment.

LABORATORY GROWN DIAMOND REPORT

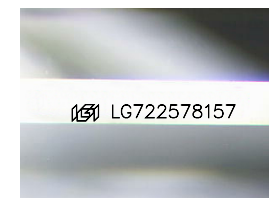
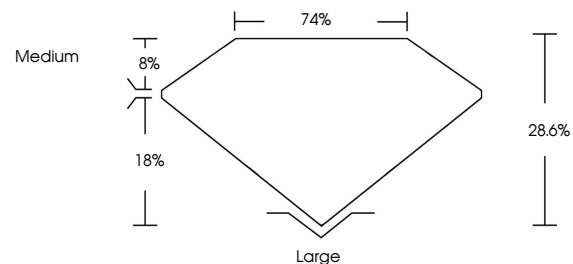
August 18, 2025
IGI Report Number **LG722578157**
Description **LABORATORY GROWN DIAMOND**
Shape and Cutting Style **SQUARE STEP CUT**
Measurements **12.29 X 11.92 X 3.41 MM**

GRADING RESULTS
Carat Weight **5.56 CARATS**
Color Grade **FANCY INTENSE BLUE**
Clarity Grade **SI 1**

ADDITIONAL GRADING INFORMATION
Polish **EXCELLENT**
Symmetry **EXCELLENT**
Fluorescence **NONE**
Inscription(s) **IGI LG722578157**

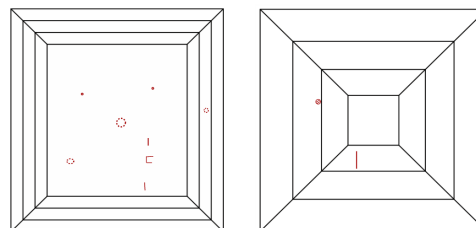
Comments: This Laboratory Grown Diamond was created by Chemical Vapor Deposition (CVD) growth process. Indications of post-growth treatment.

PROPORTIONS



Sample Image Used

CLARITY CHARACTERISTICS



KEY TO SYMBOLS

Red symbols indicate internal characteristics.
Green symbols indicate external characteristics.

COLOR

D E F G H I J Faint Very Light Light

CLARITY

IF	VS ¹⁻²	VS ¹⁻²	SI ¹⁻²	I ¹⁻³
Internally Flawless	Very Very Slightly Included	Very Slightly Included	Slightly Included	Included

