



July 24, 2025

IGI Report Number **LG722574598**

PEAR MODIFIED BRILLIANT

LABORATORY GROWN DIAMOND

8.68 X 4.90 X 3.17 MM

Carat Weight **0.98 CARAT**

Color Grade **FANCY INTENSE**

Clarity Grade **PINK**

Polish **VS 2**

Symmetry **VERY GOOD**

Fluorescence **VERY GOOD**

Inscription(s) **STRONG**

IGI LG722574598

Comments: This Laboratory Grown Diamond was created by Chemical Vapor Deposition (CVD) growth process. Indications of post-growth treatment.

LABORATORY GROWN DIAMOND REPORT

July 24, 2025

IGI Report Number

LG722574598

Description

LABORATORY GROWN DIAMOND

Shape and Cutting Style

PEAR MODIFIED BRILLIANT

Measurements

8.68 X 4.90 X 3.17 MM

GRADING RESULTS

Carat Weight

0.98 CARAT

Color Grade

FANCY INTENSE PINK

Clarity Grade

VS 2

ADDITIONAL GRADING INFORMATION

Polish

VERY GOOD

Symmetry

VERY GOOD

Fluorescence

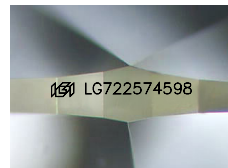
STRONG

Inscription(s)

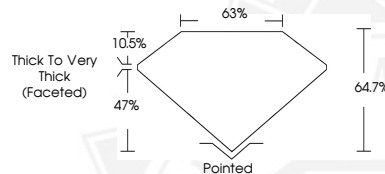
IGI LG722574598

Comments: This Laboratory Grown Diamond was created by Chemical Vapor Deposition (CVD) growth process.

Indications of post-growth treatment.



Sample Image Used



July 24, 2025

IGI Report Number **LG722574598**

PEAR MODIFIED BRILLIANT

LABORATORY GROWN DIAMOND

8.68 X 4.90 X 3.17 MM

Carat Weight **0.98 CARAT**

Color Grade **FANCY INTENSE**

Clarity Grade **PINK**

Polish **VS 2**

Symmetry **VERY GOOD**

Fluorescence **STRONG**

Inscription(s) **IGI LG722574598**

Comments: This Laboratory Grown Diamond was created by Chemical Vapor Deposition (CVD) growth process. Indications of post-growth treatment.



THIS DOCUMENT WAS PRODUCED WITH THE FOLLOWING SECURITY MEASURES: SPECIAL DOCUMENT PAPER, INK SCREENS, WATERMARK, BACKGROUND DESIGNS, HOLOGRAM AND OTHER SECURITY FEATURES NOT LISTED AND DO EXCEED DOCUMENT SECURITY INDUSTRY GUIDELINES.