



ELECTRONIC COPY

LG722572843
Report verification at igi.org



July 22, 2025
IGI Report Number **LG722572843**
Description **LABORATORY GROWN DIAMOND**
Shape and Cutting Style **SQUARE CUSHION MODIFIED BRILLIANT**
Measurements **5.57 X 5.55 X 3.86 MM**
GRADING RESULTS
Carat Weight **1.01 CARAT**
Color Grade **FANCY VIVID PINK**
Clarity Grade **VS 1**

LABORATORY GROWN DIAMOND REPORT

July 22, 2025
IGI Report Number **LG722572843**
Description **LABORATORY GROWN DIAMOND**
Shape and Cutting Style **SQUARE CUSHION MODIFIED BRILLIANT**
Measurements **5.57 X 5.55 X 3.86 MM**

GRADING RESULTS

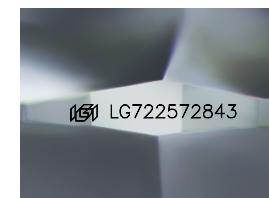
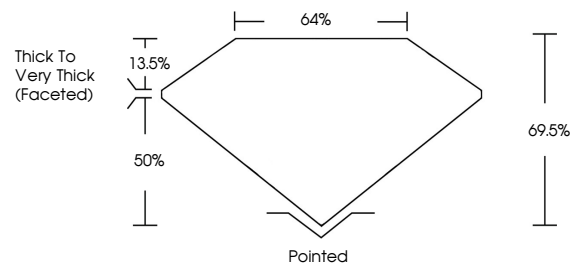
Carat Weight **1.01 CARAT**
Color Grade **FANCY VIVID PINK**
Clarity Grade **VS 1**

ADDITIONAL GRADING INFORMATION

Polish **VERY GOOD**
Symmetry **VERY GOOD**
Fluorescence **STRONG**
Inscription(s) **IGI LG722572843**

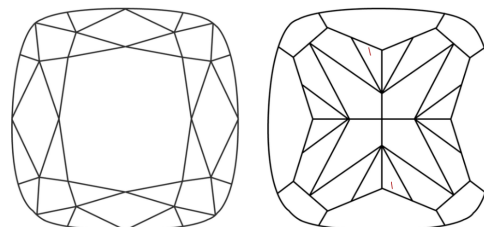
Comments: This Laboratory Grown Diamond was created by Chemical Vapor Deposition (CVD) growth process. Indications of post-growth treatment.

PROPORTIONS



Sample Image Used

CLARITY CHARACTERISTICS



KEY TO SYMBOLS

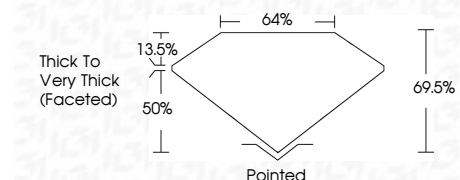
Red symbols indicate internal characteristics.
Green symbols indicate external characteristics.

COLOR

D E F G H I J Faint Very Light Light

CLARITY

IF	VS ¹⁻²	VS ¹⁻²	SI ¹⁻²	I ¹⁻³
Internally Flawless	Very Very Slightly Included	Very Slightly Included	Slightly Included	Included



ADDITIONAL GRADING INFORMATION

Polish **VERY GOOD**
Symmetry **VERY GOOD**
Fluorescence **STRONG**
Inscription(s) **IGI LG722572843**
Comments: This Laboratory Grown Diamond was created by Chemical Vapor Deposition (CVD) growth process. Indications of post-growth treatment.



IGI



July 22, 2025
IGI Report No LG722572843
SQUARE CUSHION MODIFIED BRILLIANT
1.01 CARAT
Carat Weight
Color Grade **FANCY VIVID PINK**
Clarity Grade **VS 1**
Table **64%**
Depth **50%**
Girdle **Thick to Very Thick (Faceted)**
Culet **Pointed**
Polish **VERY GOOD**
Symmetry **VERY GOOD**
Fluorescence **STRONG**
Inscription(s) **IGI LG722572843**
Comments: This Laboratory Grown Diamond was created by Chemical Vapor Deposition (CVD) growth process. Indications of post-growth treatment.