



**ELECTRONIC COPY**

## LABORATORY GROWN DIAMOND REPORT

November 11, 2025	
IGI Report Number	LG722571847
Description	LABORATORY GROWN DIAMOND
Shape and Cutting Style	PRINCESS CUT
Measurements	5.83 X 5.76 X 4.15 MM

## GRADING RESULTS

Carat Weight	1.23 CARAT
Color Grade	E
Clarity Grade	VS2

### ADDITIONAL GRADING INFORMATION

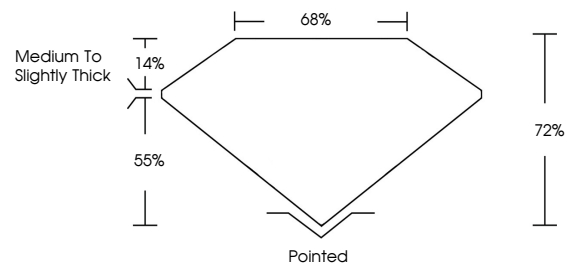
Polish	EXCELLENT
Symmetry	EXCELLENT
Fluorescence	NONE
Inscription(s)	15 LG722571847

Comments: As Grown - No indication of post-growth treatment.

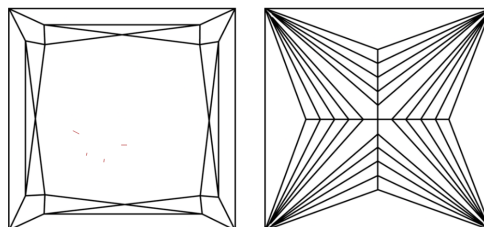
This Laboratory Grown Diamond was created by High Pressure High Temperature (HPHT) growth process.  
Type II

LG722571847  
Report verification at [igi.org](https://igi.org)

## PROPORTIONS

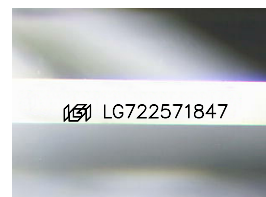


## CLARITY CHARACTERISTICS



### KEY TO SYMBOLS

Red symbols indicate internal characteristics.  
Green symbols indicate external characteristics.



Sample Image Used

## COLOR

D E F G H I J Faint Very Light Light

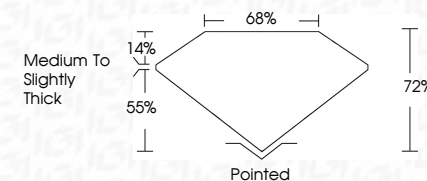
## CLARITY

FL	IF	VVS <sup>1-2</sup>	VS <sup>1-2</sup>	SI <sup>1-2</sup>	I <sup>1-3</sup>
Flawless	Internally Flawless	Very Very Slightly Included	Very Slightly Included	Slightly Included	Included

## LABORATORY GROWN DIAMOND REPORT



November 11, 2025	
IGI Report Number	LG722571847
Description	LABORATORY GROWN DIAMOND
Shape and Cutting Style	PRINCESS CUT
Measurements	5.83 X 5.76 X 4.15 MM
<b>GRADING RESULTS</b>	
Carat Weight	1.23 CARAT
Color Grade	E
Clarity Grade	VVS 2



### ADDITIONAL GRADING INFORMATION

Polish	EXCELLENT
Symmetry	EXCELLENT
Fluorescence	NONE
Inscription(s)	<del>LG</del> LG722571847
<p>Comments: As Grown - No indication of post-growth treatment.</p> <p>This Laboratory Grown Diamond was created by High Pressure High Temperature (HPHT) growth process.</p> <p>Type II</p>	



© IGI 2020, International Gemological Institute

FD - 10 20

**www.igi.org**

THIS DOCUMENT WAS PRODUCED WITH THE FOLLOWING SECURITY MEASURES: SPECIAL DOCUMENT PAPER, INK SCREENS, WATERMARK, BACKGROUND DESIGNS, HOLOGRAM AND OTHER SECURITY FEATURES NOT LISTED AND DO EXCEED DOCUMENT SECURITY INDUSTRY GUIDELINES

November 11, 2025  
GI Report No LG722571847

<b>GRI Report No 17572571847</b>					
<b>PRINCESS CUT</b>					
<b>6.93 X 5.76 X 4.16 MM</b>					
Carat Weight	1.23 CARAT				
Color Grade	E				
Clarity Grade	VVS 2				
Depth %	72%				
Table	68%				
Grades	Medium To Slightly Infix				
Culet	Poined				
Polish	EXCELLENT				
Symmetry	EXCELLENT				
Fluorescence	NONE				
cert# GPCWZP1847A07					

**Comments:**  
As Grown - No indication of post-growth treatment.