



ELECTRONIC COPY

LABORATORY GROWN DIAMOND REPORT

August 25, 2025
IGI Report Number LG722566056
Description LABORATORY GROWN DIAMOND
Shape and Cutting Style SQUARE EMERALD CUT
Measurements 7.67 X 7.67 X 4.86 MM

GRADING RESULTS

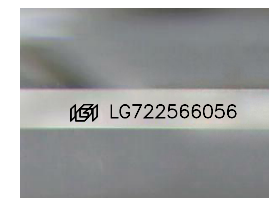
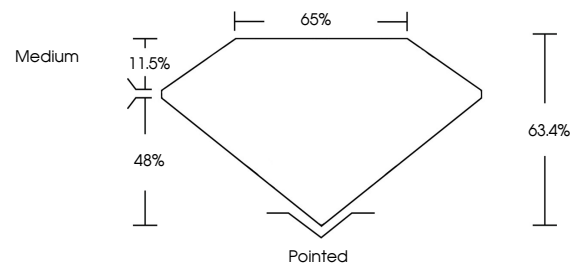
Carat Weight 2.50 CARATS
Color Grade E
Clarity Grade VVS 2

ADDITIONAL GRADING INFORMATION

Polish EXCELLENT
Symmetry EXCELLENT
Fluorescence NONE
Inscription(s) IGI LG722566056

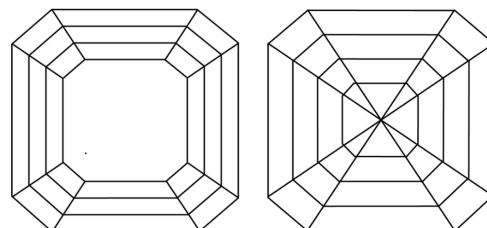
Comments: This Laboratory Grown Diamond was created by Chemical Vapor Deposition (CVD) growth process. Type IIa

PROPORTIONS



Sample Image Used

CLARITY CHARACTERISTICS



KEY TO SYMBOLS

Red symbols indicate internal characteristics.
Green symbols indicate external characteristics.

COLOR

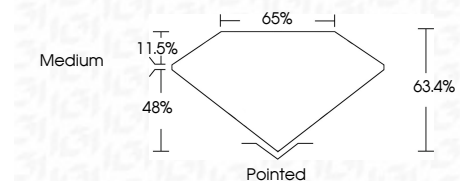
D E F G H I J Faint Very Light Light

CLARITY

IF WS¹⁻² VS¹⁻² SI¹⁻² I¹⁻³
Internally Flawless Very Very Slightly Included Very Slightly Included Slightly Included Included



August 25, 2025
IGI Report Number LG722566056
Description LABORATORY GROWN DIAMOND
Shape and Cutting Style SQUARE EMERALD CUT
Measurements 7.67 X 7.67 X 4.86 MM
GRADING RESULTS
Carat Weight 2.50 CARATS
Color Grade E
Clarity Grade VVS 2



ADDITIONAL GRADING INFORMATION

Polish EXCELLENT
Symmetry EXCELLENT
Fluorescence NONE
Inscription(s) IGI LG722566056
Comments: This Laboratory Grown Diamond was created by Chemical Vapor Deposition (CVD) growth process. Type IIa



August 25, 2025
IGI Report No LG722566056
SQUARE EMERALD CUT
2.50 CARATS E
Carat Weight 2.50
Color Grade E
Clarity Grade VVS 2
Depth 63.4%
Table 65%
Girdle Medium
Culet Pointed
Polish EXCELLENT
Symmetry EXCELLENT
Fluorescence NONE
Inscription(s) IGI LG722566056
Comments: This Laboratory Grown Diamond was created by Chemical Vapor Deposition (CVD) growth process. Type IIa