



ELECTRONIC COPY

LG722564256 Report verification at igi.org



September 19, 2025 IGI Report Number LG722564256 Description LABORATORY GROWN DIAMOND Shape and Cutting Style CUT CORNERED RECTANGULAR MODIFIED BRILLIANT Measurements 9.29 X 6.39 X 4.15 MM GRADING RESULTS Carat Weight 2.12 CARATS Color Grade E Clarity Grade VS 1

September 19, 2025 IGI Report Number LG722564256 Description LABORATORY GROWN DIAMOND Shape and Cutting Style CUT CORNERED RECTANGULAR MODIFIED BRILLIANT Measurements 9.29 X 6.39 X 4.15 MM

GRADING RESULTS

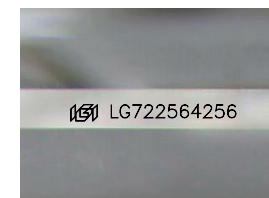
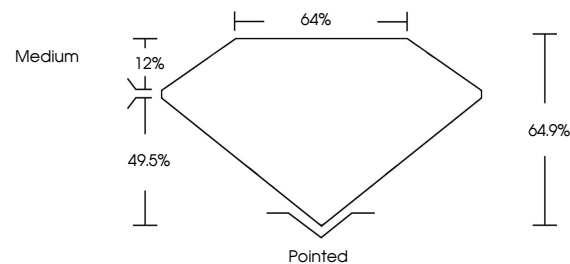
Carat Weight 2.12 CARATS Color Grade E Clarity Grade VS 1

ADDITIONAL GRADING INFORMATION

Polish EXCELLENT Symmetry EXCELLENT Fluorescence NONE Inscription(s) IGI LG722564256

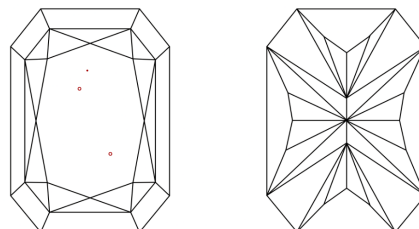
Comments: This Laboratory Grown Diamond was created by Chemical Vapor Deposition (CVD) growth process. Type IIa

PROPORTIONS



Sample Image Used

CLARITY CHARACTERISTICS



KEY TO SYMBOLS

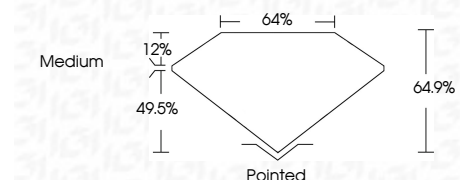
Red symbols indicate internal characteristics. Green symbols indicate external characteristics.

COLOR

D E F G H I J Faint Very Light Light

CLARITY

IF WS 1-2 VS 1-2 SI 1-2 I 1-3 Internally Flawless Very Very Slightly Included Very Slightly Included Slightly Included Included



ADDITIONAL GRADING INFORMATION

Polish EXCELLENT Symmetry EXCELLENT Fluorescence NONE Inscription(s) IGI LG722564256 Comments: This Laboratory Grown Diamond was created by Chemical Vapor Deposition (CVD) growth process. Type IIa



September 19, 2025 IGI Report No LG722564256 CUT CORNERED RECT. MODIFIED BRILLIANT 2.12 CARATS E VS 1 64.9% 49.5% Medium Pointed EXCELLENT EXCELLENT NONE NONE IGI LG722564256 Comments: This Laboratory Grown Diamond was created by Chemical Vapor Deposition (CVD) growth process. Type IIa