



ELECTRONIC COPY

LG722564245 Report verification at igi.org



September 19, 2025

IGI Report Number LG722564245

Description LABORATORY GROWN DIAMOND

Shape and Cutting Style CUT CORNERED RECTANGULAR MODIFIED BRILLIANT

Measurements 9.25 X 6.42 X 4.29 MM

GRADING RESULTS

Carat Weight 2.19 CARATS

Color Grade E

Clarity Grade VVS 2

September 19, 2025
IGI Report Number LG722564245
Description LABORATORY GROWN DIAMOND
Shape and Cutting Style CUT CORNERED RECTANGULAR MODIFIED BRILLIANT
Measurements 9.25 X 6.42 X 4.29 MM

GRADING RESULTS

Carat Weight 2.19 CARATS

Color Grade E

Clarity Grade VVS 2

ADDITIONAL GRADING INFORMATION

Polish EXCELLENT

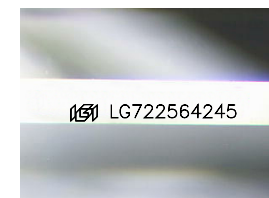
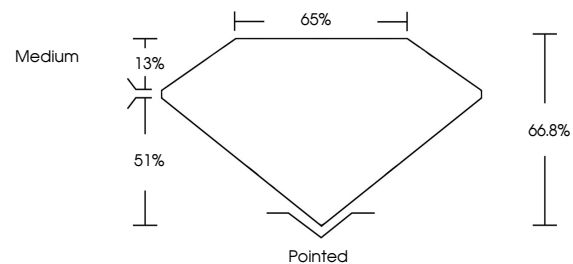
Symmetry EXCELLENT

Fluorescence NONE

Inscription(s) LG722564245

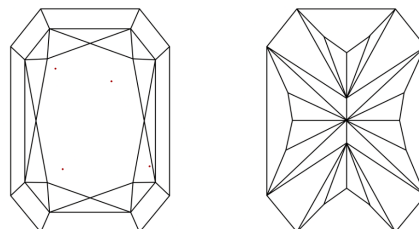
Comments: This Laboratory Grown Diamond was created by Chemical Vapor Deposition (CVD) growth process. Type IIa

PROPORTIONS



Sample Image Used

CLARITY CHARACTERISTICS



KEY TO SYMBOLS

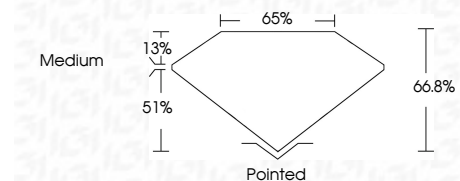
Red symbols indicate internal characteristics. Green symbols indicate external characteristics.

COLOR

D E F G H I J Faint Very Light Light

CLARITY

IF WS 1-2 VS 1-2 SI 1-2 I 1-3 Internally Flawless Very Very Slightly Included Very Slightly Included Slightly Included Included



ADDITIONAL GRADING INFORMATION

Polish EXCELLENT

Symmetry EXCELLENT

Fluorescence NONE

Inscription(s) LG722564245

Comments: This Laboratory Grown Diamond was created by Chemical Vapor Deposition (CVD) growth process. Type IIa



September 19, 2025
IGI Report No LG722564245
CUT CORNERED RECT. MODIFIED BRILLIANT
9.25 X 6.42 X 4.29 MM
2.19 CARATS
E
VVS 2
66.8%
65%
Medium
Pointed
EXCELLENT
EXCELLENT
NONE
LG722564245
Comments: This Laboratory Grown Diamond was created by Chemical Vapor Deposition (CVD) growth process. Type IIa