



**ELECTRONIC COPY**

LG722563796  
Report verification at [igi.org](http://igi.org)



September 30, 2025  
IGI Report Number **LG722563796**  
Description **LABORATORY GROWN DIAMOND**  
Shape and Cutting Style **CUT CORNERED SQUARE  
MODIFIED BRILLIANT**  
Measurements **9.93 X 9.42 X 6.40 MM**  
**GRADING RESULTS**  
Carat Weight **5.57 CARATS**  
Color Grade **F**  
Clarity Grade **VS 1**

**LABORATORY GROWN DIAMOND REPORT**

September 30, 2025  
IGI Report Number **LG722563796**  
Description **LABORATORY GROWN DIAMOND**  
Shape and Cutting Style **CUT CORNERED SQUARE  
MODIFIED BRILLIANT**  
Measurements **9.93 X 9.42 X 6.40 MM**

**GRADING RESULTS**

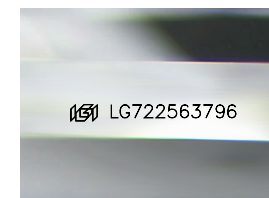
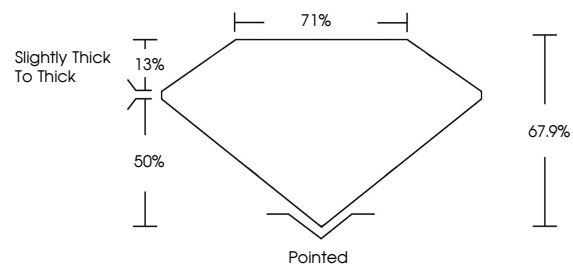
Carat Weight **5.57 CARATS**  
Color Grade **F**  
Clarity Grade **VS 1**

**ADDITIONAL GRADING INFORMATION**

Polish **EXCELLENT**  
Symmetry **EXCELLENT**  
Fluorescence **NONE**  
Inscription(s) **IGI LG722563796**

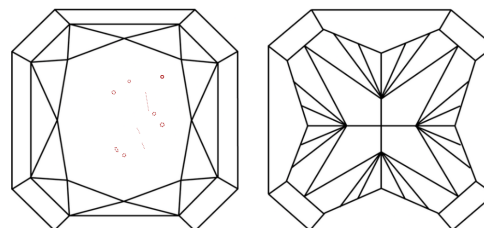
Comments: This Laboratory Grown Diamond was created by Chemical Vapor Deposition (CVD) growth process.  
Type IIa

**PROPORTIONS**



Sample Image Used

**CLARITY CHARACTERISTICS**



**KEY TO SYMBOLS**

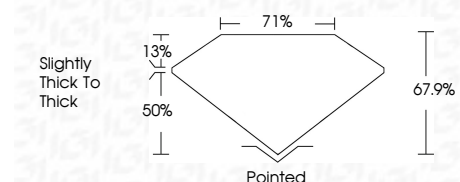
Red symbols indicate internal characteristics.  
Green symbols indicate external characteristics.

**COLOR**

D E F G H I J Faint Very Light Light

**CLARITY**

| FL       | IF                  | VS <sup>1-2</sup>           | VS <sup>1-2</sup>      | SI <sup>1-2</sup> | I <sup>1-3</sup> |
|----------|---------------------|-----------------------------|------------------------|-------------------|------------------|
| Flawless | Internally Flawless | Very Very Slightly Included | Very Slightly Included | Slightly Included | Included         |



**ADDITIONAL GRADING INFORMATION**

Polish **EXCELLENT**  
Symmetry **EXCELLENT**  
Fluorescence **NONE**  
Inscription(s) **IGI LG722563796**  
Comments: This Laboratory Grown Diamond was created by Chemical Vapor Deposition (CVD) growth process.  
Type IIa



September 30, 2025  
IGI Report No LG722563796  
**CUT CORNERED SQUARE MODIFIED BRILLIANT**  
9.93 X 9.42 X 6.40 MM  
Carat Weight **5.57 CARATS**  
Color Grade **F**  
Clarity Grade **VS 1**  
Table **67.9%**  
Depth **71%**  
Girdle **Slightly thick to thick**  
Culet **Pointed**  
Polish **EXCELLENT**  
Symmetry **EXCELLENT**  
Fluorescence **NONE**  
Inscription(s) **IGI LG722563796**  
Comments: This Laboratory Grown Diamond was created by Chemical Vapor Deposition (CVD) growth process.  
Type IIa