



ELECTRONIC COPY

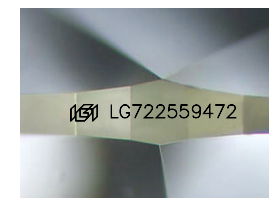
LG722559472
Report verification at igi.org



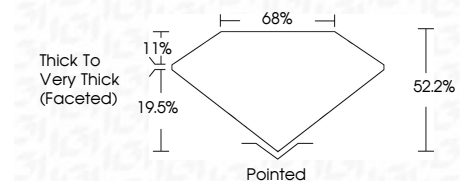
July 22, 2025
IGI Report Number **LG722559472**
Description **LABORATORY GROWN DIAMOND**
Shape and Cutting Style **HEART MODIFIED BRILLIANT**
Measurements **6.50 X 7.74 X 4.04 MM**

GRADING RESULTS

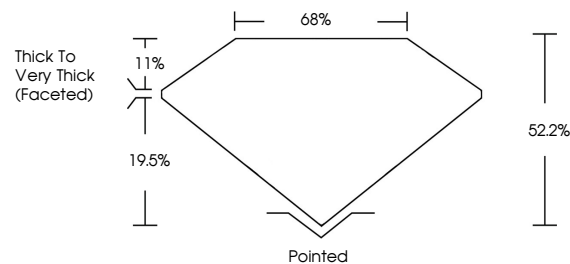
Carat Weight **1.64 CARAT**
Color Grade **FANCY YELLOW**
Clarity Grade **VVS 2**



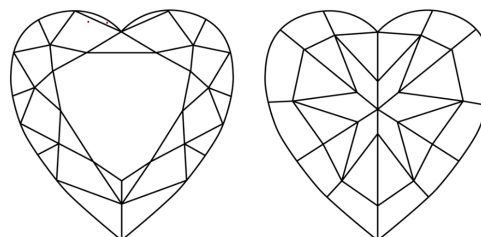
Sample Image Used



PROPORTIONS



CLARITY CHARACTERISTICS



KEY TO SYMBOLS

Red symbols indicate internal characteristics.
Green symbols indicate external characteristics.

COLOR

D E F G H I J Faint Very Light Light

CLARITY

IF VS¹⁻² VS¹⁻² SI¹⁻² I¹⁻³

Internally Flawless Very Very Slightly Included Very Slightly Included Slightly Included Included

ADDITIONAL GRADING INFORMATION

Polish **EXCELLENT**
Symmetry **EXCELLENT**
Fluorescence **NONE**
Inscription(s) **IGI LG722559472**
Comments: This Laboratory Grown Diamond was created by Chemical Vapor Deposition (CVD) growth process.



IGI



July 22, 2025
IGI Report No LG722559472
HEART MODIFIED BRILLIANT
6.50 X 7.74 X 4.04 MM
1.64 CARAT
FANCY YELLOW
VVS 2
68.2%
65%
Thick to Very Thick (Faceted)
Pointed
EXCELLENT
EXCELLENT
NONE
IGI LG722559472

Comments: This Laboratory Grown Diamond was created by Chemical Vapor Deposition (CVD) growth process.