



**ELECTRONIC COPY**

LG722555936  
Report verification at igi.org



July 14, 2025

IGI Report Number **LG722555936**

Description **LABORATORY GROWN DIAMOND**

Shape and Cutting Style **EMERALD CUT**

Measurements **14.49 X 10.34 X 6.95 MM**

**GRADING RESULTS**

Carat Weight **10.02 CARATS**

Color Grade **F**

Clarity Grade **VVS 2**

July 14, 2025  
IGI Report Number **LG722555936**  
Description **LABORATORY GROWN DIAMOND**  
Shape and Cutting Style **EMERALD CUT**  
Measurements **14.49 X 10.34 X 6.95 MM**

**GRADING RESULTS**

Carat Weight **10.02 CARATS**

Color Grade **F**

Clarity Grade **VVS 2**

**ADDITIONAL GRADING INFORMATION**

Polish **EXCELLENT**

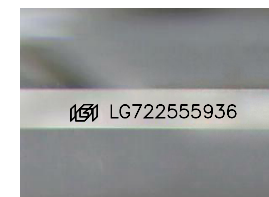
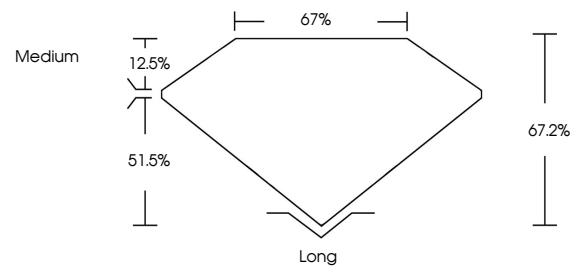
Symmetry **EXCELLENT**

Fluorescence **NONE**

Inscription(s) **IGI LG722555936**

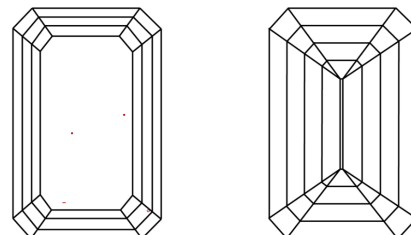
Comments: This Laboratory Grown Diamond was created by Chemical Vapor Deposition (CVD) growth process.  
Type IIa

**PROPORTIONS**



Sample Image Used

**CLARITY CHARACTERISTICS**



**KEY TO SYMBOLS**

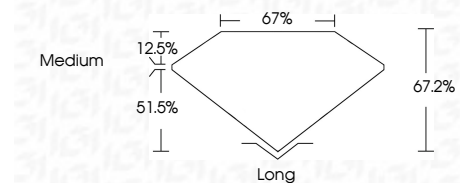
Red symbols indicate internal characteristics.  
Green symbols indicate external characteristics.

**COLOR**

D E F G H I J Faint Very Light Light

**CLARITY**

IF	VS <sup>1-2</sup>	VVS <sup>1-2</sup>	S <sup>1-2</sup>	I <sup>1-3</sup>
Internally Flawless	Very Very Slightly Included	Very Slightly Included	Slightly Included	Included



**ADDITIONAL GRADING INFORMATION**

Polish **EXCELLENT**

Symmetry **EXCELLENT**

Fluorescence **NONE**

Inscription(s) **IGI LG722555936**

Comments: This Laboratory Grown Diamond was created by Chemical Vapor Deposition (CVD) growth process.  
Type IIa



**IGI**



July 14, 2025  
IGI Report No LG722555936  
**EMERALD CUT**  
14.49 X 10.34 X 6.95 MM  
10.02 CARATS  
F  
10.02 CARATS  
VVS 2  
67.2%  
67%  
Medium  
Long  
EXCELLENT  
EXCELLENT  
NONE  
IGI LG722555936  
Comments: This Laboratory Grown Diamond was created by Chemical Vapor Deposition (CVD) growth process.  
Type IIa