



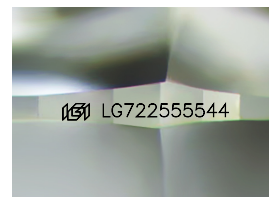
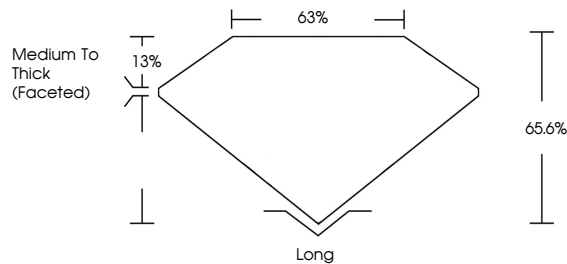
**INTERNATIONAL  
GEMOLOGICAL  
INSTITUTE**

**ELECTRONIC COPY**

## LABORATORY GROWN DIAMOND REPORT

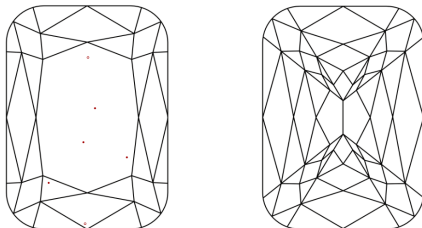
LG72255544  
Report verification at [igi.org](https://igi.org)

## PROPORTIONS



Sample Image Used

## CLARITY CHARACTERISTICS



## KEY TO SYMBOLS

Red symbols indicate internal characteristics.  
Green symbols indicate external characteristics.

**COLOR**

D E F G H I J Faint Very Light Light

## CLARITY

IF      WS<sup>1-2</sup>      VS<sup>1-2</sup>      SI<sup>1-2</sup>      I<sup>1-3</sup>

Internally Flawless	Very Very Slightly Included	Very Slightly Included	Slightly Included	Included
------------------------	--------------------------------	---------------------------	----------------------	----------



© IGI 2020, International Gemological Institute

FD - 10 20

**www.igi.org**

THIS DOCUMENT WAS PRODUCED WITH THE FOLLOWING SECURITY MEASURES: SPECIAL DOCUMENT PAPER, INK SCREENS, WATERMARK, BACKGROUND DESIGNS, HOLOGRAM AND OTHER SECURITY FEATURES NOT LISTED AND DO EXCEED DOCUMENT SECURITY INDUSTRY GUIDELINES

## LABORATORY GROWN DIAMOND REPORT



July 15, 2025

IGI Report Number **LG722555544**

Description	LABORATORY GROWN DIAMOND
-------------	--------------------------

Shape and Cutting Style      **RECTANGULAR CUSHION  
MIXED CUT**

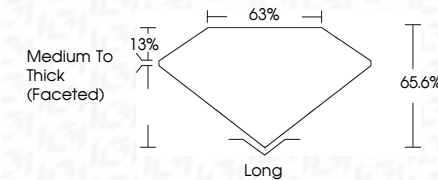
Measurements **13.06 X 7.61 X 4.99 MM**

## GRADING RESULTS

Carat Weight **4.57 CARATS**

Color Grade **D**

Clarity Grade VS 1



### ADDITIONAL GRADING INFORMATION

Polish **EXCELLENT**

Symmetry **EXCELLENT**

Fluorescence **NONE**Inscription(s)  LG72255554

Comments: This Laboratory Grown Diamond was created by Chemical Vapor Deposition (CVD) growth process.  
Type IIa



IG

<b>JULY 16, 2025</b>	<b>IGI Report No. G72265544</b>	<b>RECTANGULAR CUSHION MIXED CUT</b>	<b>4.57 CARATS</b>	<b>D</b>	<b>Vs1</b>	<b>65.6%</b>	<b>68%</b>	<b>Medium to Thick (graded)</b>	<b>Long</b>	<b>EXCELLENT</b>	<b>EXCELLENT</b>	<b>NONE</b>	<b>(gsl) G72265544</b>	<b>Compare:</b>	<b>The Laboratory's Graded Diamond was created by Chemical Vapor Deposition (CVD) growth process.</b>	<b>Type Ila</b>
		<b>13.06 X 7.61 X 4.99 MM</b>	<b>Carat Weight</b>	<b>Color Grade</b>	<b>Clarity Grade</b>	<b>Cut Grade</b>	<b>Table</b>	<b>Girdle</b>	<b>Culet</b>	<b>Symmetry</b>	<b>Fluorescence</b>	<b>Inscriptions(s)</b>				