



**ELECTRONIC COPY**

LG722551343  
Report verification at [igi.org](http://igi.org)



July 14, 2025  
IGI Report Number **LG722551343**  
Description **LABORATORY GROWN DIAMOND**  
Shape and Cutting Style **OCTAGONAL MODIFIED BRILLIANT**  
Measurements **7.26 X 7.22 X 4.61 MM**  
**GRADING RESULTS**  
Carat Weight **1.50 CARAT**  
Color Grade **F**  
Clarity Grade **VVS 1**

**LABORATORY GROWN DIAMOND REPORT**

July 14, 2025  
IGI Report Number **LG722551343**  
Description **LABORATORY GROWN DIAMOND**  
Shape and Cutting Style **OCTAGONAL MODIFIED BRILLIANT**  
Measurements **7.26 X 7.22 X 4.61 MM**

**GRADING RESULTS**

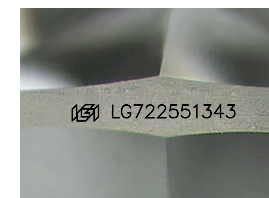
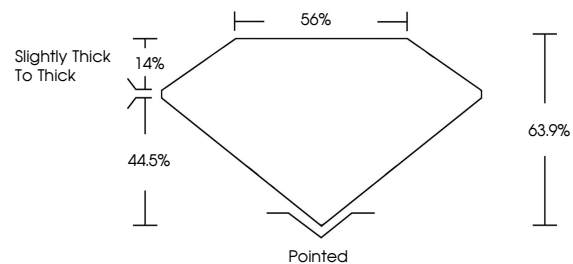
Carat Weight **1.50 CARAT**  
Color Grade **F**  
Clarity Grade **VVS 1**

**ADDITIONAL GRADING INFORMATION**

Polish **EXCELLENT**  
Symmetry **EXCELLENT**  
Fluorescence **NONE**  
Inscription(s) **(IGI) LG722551343**

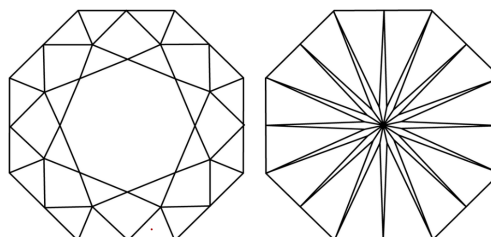
Comments: This Laboratory Grown Diamond was created by Chemical Vapor Deposition (CVD) growth process.  
Type IIa

**PROPORTIONS**



Sample Image Used

**CLARITY CHARACTERISTICS**



**KEY TO SYMBOLS**

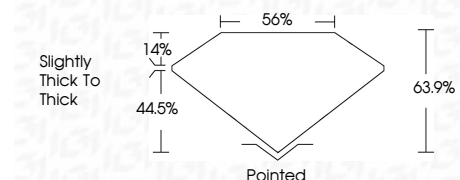
Red symbols indicate internal characteristics.  
Green symbols indicate external characteristics.

**COLOR**

D E F G H I J Faint Very Light Light

**CLARITY**

IF	VS <sup>1-2</sup>	VVS <sup>1-2</sup>	S <sup>1-2</sup>	I <sup>1-3</sup>
Internally Flawless	Very Very Slightly Included	Very Slightly Included	Slightly Included	Included



**ADDITIONAL GRADING INFORMATION**

Polish **EXCELLENT**  
Symmetry **EXCELLENT**  
Fluorescence **NONE**  
Inscription(s) **(IGI) LG722551343**  
Comments: This Laboratory Grown Diamond was created by Chemical Vapor Deposition (CVD) growth process.  
Type IIa



*Certified*  
**SUSTAINABILITY RATED DIAMOND**  
SCS GLOBAL SERVICES

All certified diamonds come with an individual certificate, **ONLY** available at an accredited retailer

FOR THE SUSTAINABILITY RATED CERTIFICATE, SCAN HERE →

THIS DOCUMENT WAS PRODUCED WITH THE FOLLOWING SECURITY MEASURES: SPECIAL DOCUMENT PAPER, INK SCREENS, WATERMARK BACKGROUND DESIGNS, HOLOGRAM AND OTHER SECURITY FEATURES NOT LISTED AND DO EXCEED DOCUMENT SECURITY INDUSTRY GUIDELINES.

July 14, 2025  
IGI Report No LG722551343  
**OCTAGONAL MODIFIED BRILLIANT**  
7.26 X 7.22 X 4.61 MM  
1.50 CARAT  
F  
VVS 1  
63.9%  
65%  
Slightly Thick To Thick  
Pointed  
EXCELLENT  
EXCELLENT  
NONE  
Inscriptions (s) (IGI) LG722551343

Comments: This Laboratory Grown Diamond was created by Chemical Vapor Deposition (CVD) growth process.  
Type IIa