



**ELECTRONIC COPY**

LG722539100  
Report verification at igi.org



July 15, 2025

IGI Report Number **LG722539100**

Description **LABORATORY GROWN DIAMOND**

Shape and Cutting Style **EMERALD CUT**

Measurements **11.54 X 8.19 X 5.51 MM**

**GRADING RESULTS**

Carat Weight **5.08 CARATS**

Color Grade **G**

Clarity Grade **VVS 2**

July 15, 2025  
IGI Report Number **LG722539100**  
Description **LABORATORY GROWN DIAMOND**  
Shape and Cutting Style **EMERALD CUT**  
Measurements **11.54 X 8.19 X 5.51 MM**

**GRADING RESULTS**

Carat Weight **5.08 CARATS**

Color Grade **G**

Clarity Grade **VVS 2**

**ADDITIONAL GRADING INFORMATION**

Polish **EXCELLENT**

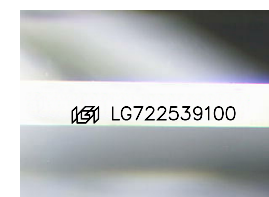
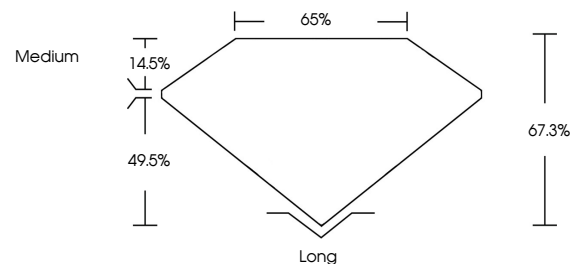
Symmetry **EXCELLENT**

Fluorescence **NONE**

Inscription(s) **IGI LG722539100**

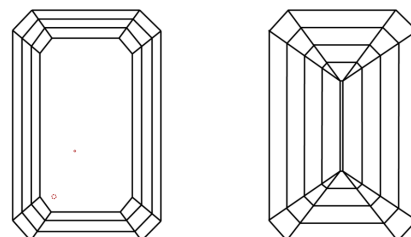
Comments: This Laboratory Grown Diamond was created by Chemical Vapor Deposition (CVD) growth process.  
Type IIa

**PROPORTIONS**



Sample Image Used

**CLARITY CHARACTERISTICS**



**KEY TO SYMBOLS**

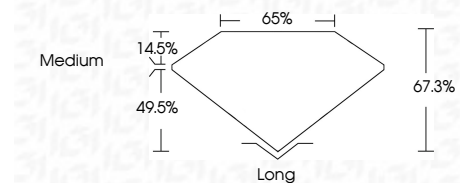
Red symbols indicate internal characteristics.  
Green symbols indicate external characteristics.

**COLOR**

D E F G H I J Faint Very Light Light

**CLARITY**

IF	VS <sup>1-2</sup>	VS <sup>1-2</sup>	SI <sup>1-2</sup>	I <sup>1-3</sup>
Internally Flawless	Very Very Slightly Included	Very Slightly Included	Slightly Included	Included



**ADDITIONAL GRADING INFORMATION**

Polish **EXCELLENT**

Symmetry **EXCELLENT**

Fluorescence **NONE**

Inscription(s) **IGI LG722539100**

Comments: This Laboratory Grown Diamond was created by Chemical Vapor Deposition (CVD) growth process.  
Type IIa



**IGI**



July 15, 2025  
IGI Report No LG722539100  
EMERALD CUT

5.08 CARATS  
G

11.54 X 8.19 X 5.51 MM

Carat Weight  
Color Grade  
Clarity Grade  
Depth  
Table  
Girdle  
Medium

14.5%  
49.5%  
65%  
67.3%

Long  
EXCELLENT  
EXCELLENT  
NONE  
IGI LG722539100

Culet  
Polish  
Symmetry  
Fluorescence  
Inscription(s)

Comments: This Laboratory Grown Diamond was created by Chemical Vapor Deposition (CVD) growth process.  
Type IIa