

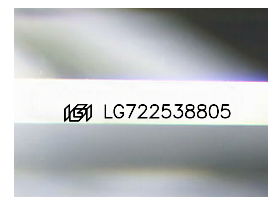
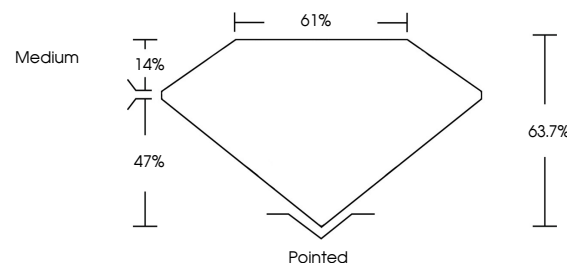


**ELECTRONIC COPY**

## LABORATORY GROWN DIAMOND REPORT

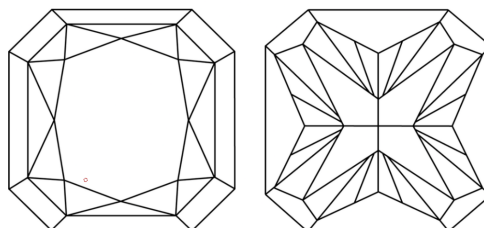
LG722538805  
Report verification at [igi.org](https://igi.org)

## PROPORTIONS



Sample Image Used

## CLARITY CHARACTERISTICS



### KEY TO SYMBOLS

Red symbols indicate internal characteristics.  
Green symbols indicate external characteristics.

## COLOR

D E F G H I J Faint Very Light Light

## CLARITY

IF	VVS <sup>1-2</sup>	VS <sup>1-2</sup>	SI <sup>1-2</sup>	I <sup>1-3</sup>
Internally Flawless	Very Very Slightly Included	Very Slightly Included	Slightly Included	Included

## LABORATORY GROWN DIAMOND REPORT



July 16, 2025

IGI Report Number **LG722538805**

Description	LABORATORY GROWN DIAMOND
-------------	--------------------------

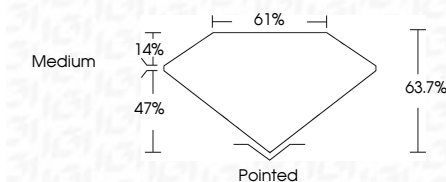
Shape and Cutting Style **CUT CORNERED SQUARE  
MODIFIED BRILLIANT**

Measurements **7.20 X 7.10 X 4.52 MM**

## GRADING RESULTS

Carat Weight **2.01 CARATS**

Color Grade	D
-------------	---

Clarity Grade VVS 2

### ADDITIONAL GRADING INFORMATION

Polish **EXCELLENT**Symmetry **EXCELLENT**Fluorescence NONEInscription(s)  LG722538805

Comments: This Laboratory Grown Diamond was created by Chemical Vapor Deposition (CVD) growth process.  
Type IIa



© IGI 2020, International Gemological Institute

FD - 10 20

**www.igi.org**

THIS DOCUMENT WAS PRODUCED WITH THE FOLLOWING SECURITY MEASURES: SPECIAL DOCUMENT PAPER, INK SCREENS, WATERMARK, BACKGROUND DESIGNS, HOLOGRAM AND OTHER SECURITY FEATURES NOT LISTED AND DO EXCEED DOCUMENT SECURITY INDUSTRY GUIDELINES

July 16, 2025	GI Report No. LG72558605	
	CUT CORNERED SQUARE MODIFIED	
	BULLANT	
	2.20 X 7.10 X 4.82 MM	
	Carat Weight	2.01 CARATS
	Color Grade	D
	Clarity Grade	VVS 2
	Depth	63.7%
	Table	61%
	Grade	Medium
	Quiet	Pointed
	Polish	EXCELLENT
	Symmetry	EXCELLENT
	Fluorescence	NONE
	Inscriptions(s)	lg# LG72558605
Comments:	This Laboratory Grown Diamond was created by Chemical Vapor Deposition (CVD) growth process.	
Type IId		