



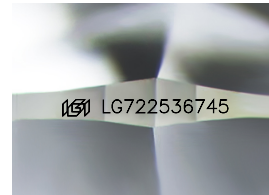
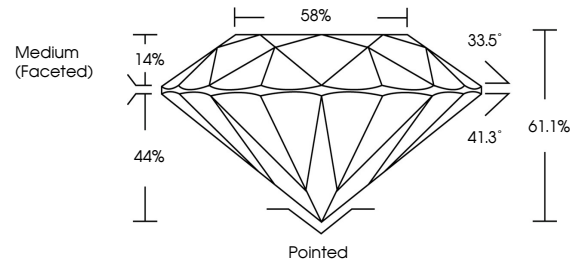
**INTERNATIONAL  
GEMOLOGICAL  
INSTITUTE**

**ELECTRONIC COPY**

## LABORATORY GROWN DIAMOND REPORT

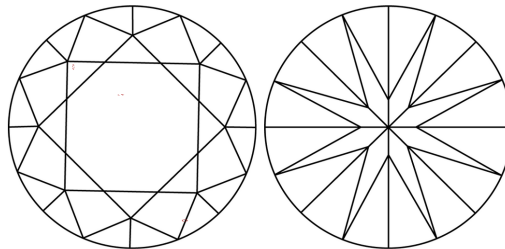
LG722536745  
Report verification at [igi.org](https://igi.org)

## PROPORTIONS



Sample Image Used

## CLARITY CHARACTERISTICS



## KEY TO SYMBOLS

Red symbols indicate internal characteristics.  
Green symbols indicate external characteristics.

## COLOR

D E F G H I J Faint Very Light Light

## CLARITY

IF      WS<sup>1-2</sup>      VS<sup>1-2</sup>      SI<sup>1-2</sup>      I<sup>1-3</sup>

Internally Flawless	Very Very Slightly Included	Very Slightly Included	Slightly Included	Included
------------------------	--------------------------------	---------------------------	----------------------	----------



© IGI 2020, International Gemological Institute

FD - 10 20

**www.igi.org**

## LABORATORY GROWN DIAMOND REPORT



August 20, 2025

IGI Report Number **LG722536745**

Description	LABORATORY GROWN DIAMOND
-------------	--------------------------

Shape and Cutting Style **ROUND BRILLIANT**

Measurements	8.86 - 8.90 X 5.43 MM
--------------	-----------------------

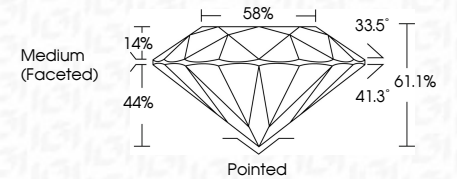
## GRADING RESULTS

Carat Weight **2.60 CARATS**

Color Grade	E
-------------	---

Clarity Grade VVS 2

Cut Grade **IDEAL**



### ADDITIONAL GRADING INFORMATION

Polish **EXCELLENT**Symmetry **EXCELLENT**Fluorescence **NONE**Inscription(s)  LG722536745

Comments: This Laboratory Grown Diamond was created by Chemical Vapor Deposition (CVD) growth process. Type IIa. Indications of post-growth treatment.



IGI

August 20, 2025 IGI Report No IGR72836748		ROUND BRILLIANT
<hr/>		
6.86 - 6.90 X 6.43 MM Color Weight Carat Grade	E	2.40 CARATS
Clarity Grade Cut Grade Depth Table Girdle	VS2 IDEAL 61.1% 58%	Medium (Faceted)
		Polished EXCELLENT EXCELLENT NONE \$9,167,283.6745
Comments: The Laboratory Grown Diamond was created by Chemical Vapor Deposition (CVD) growth process, type IIa. Indications of post-growth treatment.		