

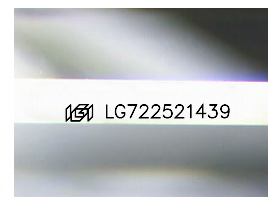
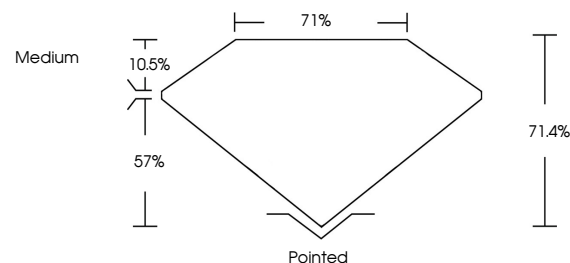


**ELECTRONIC COPY**

## LABORATORY GROWN DIAMOND REPORT

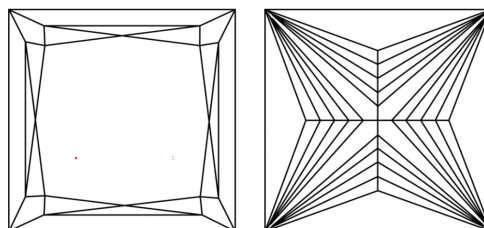
LG722521439  
Report verification at [igi.org](https://igi.org)

## PROPORTIONS



Sample Image Used

## CLARITY CHARACTERISTICS



### KEY TO SYMBOLS

Red symbols indicate internal characteristics.  
Green symbols indicate external characteristics.

## COLOR

D E F G H I J Faint Very Light Light

## CLARITY

IF	VS <sup>1-2</sup>	VS <sup>1-2</sup>	SI <sup>1-2</sup>	I <sup>1-3</sup>
Internally Flawless	Very Very Slightly Included	Very Slightly Included	Slightly Included	Included

## LABORATORY GROWN DIAMOND REPORT



July 10, 2025

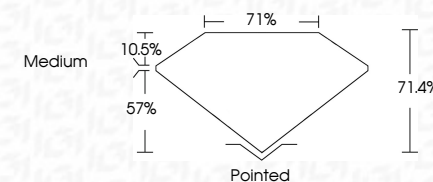
IGI Report Number **LG722521439**Description **LABORATORY GROWN DIAMOND**Shape and Cutting Style **PRINCESS CUT**

Measurements 6.02 X 6.01 X 4.29 MM

## GRADING RESULTS

Carat Weight **1.33 CARAT**

Color Grade	D
-------------	---

Clarity Grade VVS 2

### ADDITIONAL GRADING INFORMATION

Polish **EXCELLENT**Symmetry **EXCELLENT**Fluorescence **NONE**Inscription(s)  LG722521439

Comments: This Laboratory Grown Diamond was created by Chemical Vapor Deposition (CVD) growth process.  
Type IIa



**www.igi.org**

© IGI 2020, International Gemological Institute

FD - 10 20



THIS DOCUMENT WAS PRODUCED WITH THE FOLLOWING SECURITY MEASURES: SPECIAL DOCUMENT PAPER, INK SCREENS, WATERMARK, BACKGROUND DESIGNS, HOLOGRAM AND OTHER SECURITY FEATURES NOT LISTED AND DO EXCEED DOCUMENT SECURITY INDUSTRY GUIDELINES

July 10, 2025  
GI Report No LG72521439

Report No 1372327 1489	1.33 CARAT
PRECINNESS CUT	
5.02 X 6.01 X 4.29 MM	
Carat Weight	
Color Grade	
Clarity Grade	
Depth	VVS 2
Table	71.4%
Grade	71%
	Medium
Quiet	Polished
Polish	EXCELLENT
Symmetry	EXCELLENT
Fluorescence	NONE
	4891 (Carat)

**Comments:**  
This Laboratory Grown Diamond was created by Chemical Vapor Deposition (CVD) growth process.