



ELECTRONIC COPY

LABORATORY GROWN DIAMOND REPORT

LG722518522
Report verification at igi.org

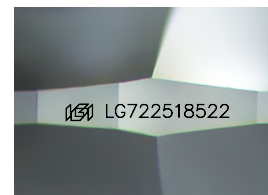
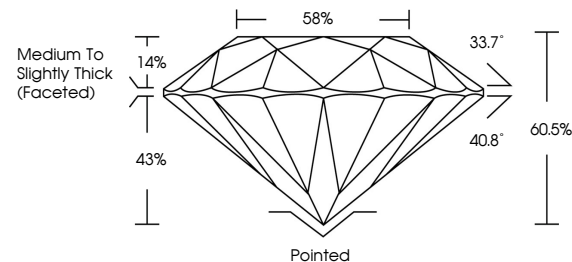
July 14, 2025	
IGI Report Number	LG722518522
Description	LABORATORY GROWN DIAMOND
Shape and Cutting Style	ROUND BRILLIANT
Measurements	6.59 - 6.60 X 3.99 MM
GRADING RESULTS	
Carat Weight	1.06 CARAT
Color Grade	E
Clarity Grade	INTERNALLY FLAWLESS
Cut Grade	IDEAL

ADDITIONAL GRADING INFORMATION

Polish	EXCELLENT
Symmetry	EXCELLENT
Fluorescence	NONE
Inscription(s)	 LG722518522

Comments: As Grown - No indication of post-growth treatment.
This Laboratory Grown Diamond was created by High Pressure High Temperature (HPHT) growth process.
Type II

PROPORTIONS



Sample Image Used

COLOR

D E F G H I J Faint Very Light Light

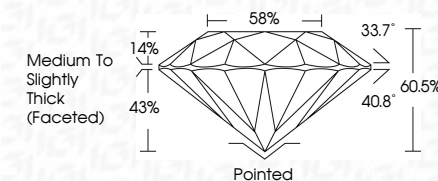
CLARITY

IF	VVS ¹⁻²	VS ¹⁻²	SI ¹⁻²	I ¹⁻³
Internally Flawless	Very Very Slightly Included	Very Slightly Included	Slightly Included	Included

LABORATORY GROWN DIAMOND REPORT



July 14, 2025	
IGI Report Number	LG722518522
Description	LABORATORY GROWN DIAMOND
Shape and Cutting Style	ROUND BRILLIANT
Measurements	6.59 - 6.60 X 3.99 MM
GRADING RESULTS	
Carat Weight	1.01 CARAT
Color Grade	E
Clarity Grade	INTERNALLY FLAWLESS
Cut Grade	IDEAL



ADDITIONAL GRADING INFORMATION

Polish	EXCELLENT
Symmetry	EXCELLENT
Fluorescence	NONE
Inscription(s)	(G) LG722518522
<p>Comments: As Grown - No indication of post-growth treatment.</p> <p>This Laboratory Grown Diamond was created by High Pressure High Temperature (HPHT) growth process.</p> <p>Type II</p>	



© IGI 2020, International Gemological Institute

FD - 10 20



THIS DOCUMENT WAS PRODUCED WITH THE FOLLOWING SECURITY MEASURES: SPECIAL DOCUMENT PAPER, INK SCREENS, WATERMARK, BACKGROUND DESIGNS, HOLOGRAM AND OTHER SECURITY FEATURES NOT LISTED AND DO EXCEED DOCUMENT SECURITY INDUSTRY GUIDELINES

www.igi.org

July 14, 2025
GJ Report No | G722518522

Report No. LG72
POUND BRILLIANT

6.59 - 6.60 X 3.99 MM

Carat Weight 1.06 CARAT

Color Grade E

Clarity Grade	I.F
FL	FL
IF	IF
VS	VS
VVS	VVS
VV	VV
V	V
S	S
I	I
P	P

Cut Grade	IDEAL
Depth	60.5%

Table 58%

Girdle
Medium To Slightly
Thick (Faceted)

Material	Painted	Unpainted
Steel	100%	100%
Aluminum	100%	100%
Copper	100%	100%
Brass	100%	100%
Galvanized Steel	100%	100%
Stainless Steel	100%	100%
Cast Iron	100%	100%
Concrete	100%	100%
Masonry	100%	100%
Wood	100%	100%
Plastic	100%	100%
Glass	100%	100%
Other	100%	100%

Polish	EXCELLENT
Czech	POOR

Symmetry	EXCELLENT
Clarity	NONE

Fluorescence	NONE
Inscription(s)	151 LG722518522

1

Comments:
As Grown - No indication of post-growth

This Laboratory Grown Diamond was created by LDC's Process 2.0. LDC

Created by High Pressure High Temperature (HPHT) growth process.

type II