

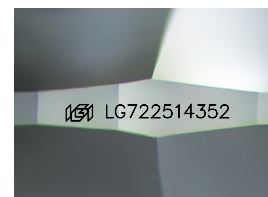
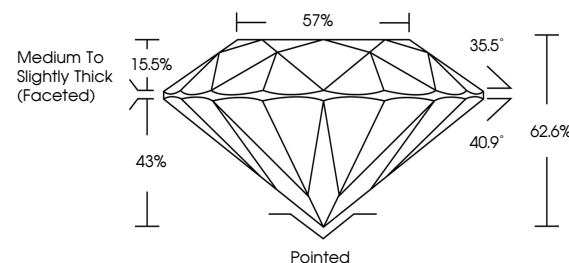


ELECTRONIC COPY

LABORATORY GROWN DIAMOND REPORT

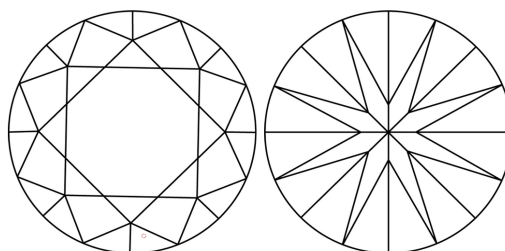
LG722514352
Report verification at igi.org

PROPORTIONS



Sample Image Used

CLARITY CHARACTERISTICS



KEY TO SYMBOLS

Red symbols indicate internal characteristics.
Green symbols indicate external characteristics.

COLOR

D E F G H I J Faint Very Light Light

CLARITY

IF WS¹⁻² VS¹⁻² SI¹⁻² |¹⁻³

Internally Flawless	Very Very Slightly Included	Very Slightly Included	Slightly Included	Included
------------------------	--------------------------------	---------------------------	----------------------	----------



© IGI 2020, International Gemological Institute

FD - 10 20

www.igi.org

LABORATORY GROWN DIAMOND REPORT



July 9, 2025

IGI Report Number **LG722514352**Description **LABORATORY GROWN DIAMOND**Shape and Cutting Style **ROUND BRILLIANT**

Measurements	6.52 - 6.56 X 4.10 MM
--------------	-----------------------

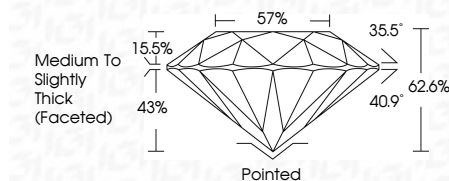
GRADING RESULTS

Carat Weight **1.10 CARAT**

Color Grade	D
-------------	---

Clarity Grade **VVS 2**

Cut Grade **EXCELLENT**



ADDITIONAL GRADING INFORMATION

Polish **EXCELLENT**Symmetry **EXCELLENT**Fluorescence **NONE**Inscription(s) LG722514352

Comments: As Grown - No indication of post-growth treatment.

This Laboratory Grown Diamond was created by High Pressure High Temperature (HPHT) growth process.



JULY 9, 2005 GI Report No. L6722614392 ROUND BRILLIANT	1.10 CARAT D VS2 D EXCELLENT 62-65% 57% Medium to Slightly Thick (faceted)	Pointed EXCELLENT EXCELLENT NONE #681 L6722614392	Comments: as Given. No indication of post-growth treatment. This Laboratory Crown Diamond was created by High Pressure High Temperature (HPHT) growth process. Type 1A
--	---	---	--