

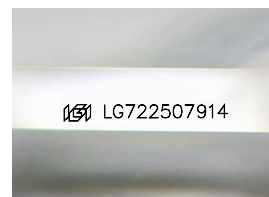
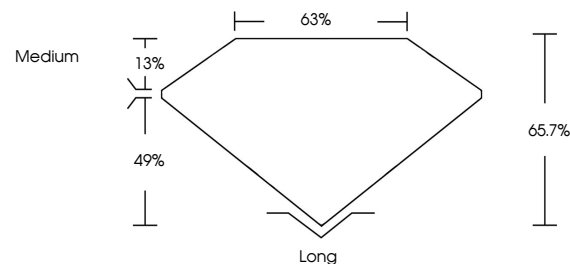


ELECTRONIC COPY

LABORATORY GROWN DIAMOND REPORT

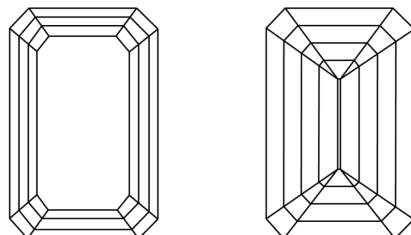
LG722507914
Report verification at lgi.org

PROPORTIONS



Sample Image Used

CLARITY CHARACTERISTICS



KEY TO SYMBOLS

Red symbols indicate internal characteristics.
Green symbols indicate external characteristics.

COLOR

D E F G H I J Faint Very Light Light

CLARITY

IF WS¹⁻² VS¹⁻² SI¹⁻² |¹⁻³

Internally Flawless	Very Very Slightly Included	Very Slightly Included	Slightly Included	Included
------------------------	--------------------------------	---------------------------	----------------------	----------

LABORATORY GROWN DIAMOND REPORT



July 11, 2025

IGI Report Number **LG722507914**Description **LABORATORY GROWN DIAMOND**Shape and Cutting Style **EMERALD CUT**

Measurements **9.76 X 6.88 X 4.52 MM**

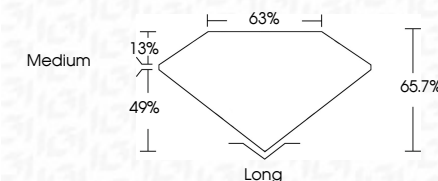
GRADING RESULTS

Carat Weight **3.04 CARATS**

Color Grade D

Clarity Grade **INTERNALLY FLAWLESS**

Cut Grade **EXCELLENT**



ADDITIONAL GRADING INFORMATION

Polish **EXCELLENT**Symmetry **EXCELLENT**Fluorescence NONIInscription(s) LG722507914

Comments: As Grown - No indication of post-growth treatment.

This Laboratory Grown Diamond was created by High Pressure High Temperature (HPHT) growth process.

Type II



IG

<p> DATE MAY 11, 2005 REPORT NO. LG72507914 REPORT CUI </p>	<p> WEIGHT 3.04 CARATS CLARITY D COLOR 3.04 CARATS CUT EXCELLENT DEPTH 62.7% TABLE 65% GRADE Medium </p>	<p> LENGTH Long WIDTH EXCELLENT DEPTH EXCELLENT SYMMETRY EXCELLENT FLUORESCENCE NONE GRADE LG72507914 </p>	<p> COMMENTS: No indication of post-growth treatment. This Laboratory Grown Diamond was created by High Pressure High Temperature (HPHT) growth process. </p>
--	---	---	--

