



ELECTRONIC COPY

LG720599347
Report verification at igi.org



July 14, 2025

IGI Report Number **LG720599347**

Description **LABORATORY GROWN DIAMOND**

Shape and Cutting Style **EMERALD CUT**

Measurements **7.65 X 5.33 X 3.83 MM**

GRADING RESULTS

Carat Weight **1.57 CARAT**

Color Grade **FANCY INTENSE PINK**

Clarity Grade **VS 2**

LABORATORY GROWN DIAMOND REPORT

July 14, 2025

IGI Report Number **LG720599347**

Description **LABORATORY GROWN DIAMOND**

Shape and Cutting Style **EMERALD CUT**

Measurements **7.65 X 5.33 X 3.83 MM**

GRADING RESULTS

Carat Weight **1.57 CARAT**

Color Grade **FANCY INTENSE PINK**

Clarity Grade **VS 2**

ADDITIONAL GRADING INFORMATION

Polish **EXCELLENT**

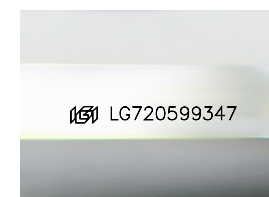
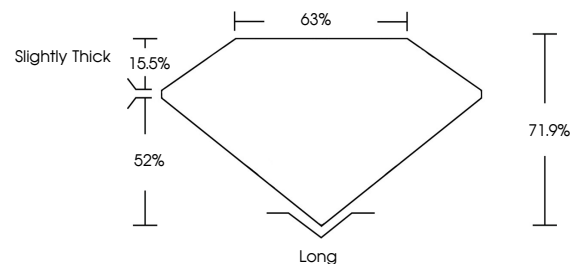
Symmetry **EXCELLENT**

Fluorescence **STRONG**

Inscription(s) **LG720599347**

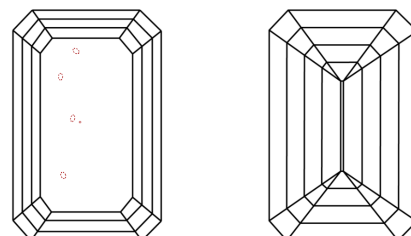
Comments: This Laboratory Grown Diamond was created by Chemical Vapor Deposition (CVD) growth process. Indications of post-growth treatment.

PROPORTIONS



Sample Image Used

CLARITY CHARACTERISTICS



KEY TO SYMBOLS

Red symbols indicate internal characteristics.
Green symbols indicate external characteristics.

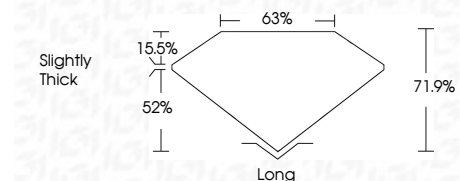
COLOR

D E F G H I J Faint Very Light Light

CLARITY

IF VS¹⁻² VS¹⁻² SI¹⁻² I¹⁻³

Internally Flawless Very Very Slightly Included Very Slightly Included Slightly Included Included



ADDITIONAL GRADING INFORMATION

Polish **EXCELLENT**

Symmetry **EXCELLENT**

Fluorescence **STRONG**

Inscription(s) **LG720599347**

Comments: This Laboratory Grown Diamond was created by Chemical Vapor Deposition (CVD) growth process. Indications of post-growth treatment.



July 14, 2025
IGI Report No LG720599347
EMERALD CUT

1.57 CARAT
7.65 X 5.33 X 3.83 MM
Color Grade **FANCY INTENSE PINK**
Clarity Grade **VS 2**
Depth **71.9%**
Table **63%**
Girdle **Slightly Thick**

Long **EXCELLENT**
Polish **EXCELLENT**
Symmetry **EXCELLENT**
Fluorescence **STRONG**
Inscription(s) **LG720599347**

Comments: This Laboratory Grown Diamond was created by Chemical Vapor Deposition (CVD) growth process. Indications of post-growth treatment.