



ELECTRONIC COPY

LG720597394 Report verification at igi.org



July 8, 2025 IGI Report Number LG720597394 Description LABORATORY GROWN DIAMOND Shape and Cutting Style ROUND BRILLIANT Measurements 14.24 - 14.27 X 8.80 MM GRADING RESULTS Carat Weight 11.02 CARATS Color Grade E Clarity Grade VVS 2 Cut Grade IDEAL

July 8, 2025 IGI Report Number LG720597394 Description LABORATORY GROWN DIAMOND Shape and Cutting Style ROUND BRILLIANT Measurements 14.24 - 14.27 X 8.80 MM

GRADING RESULTS

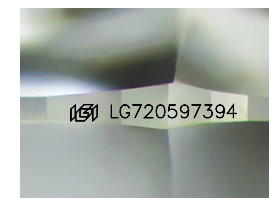
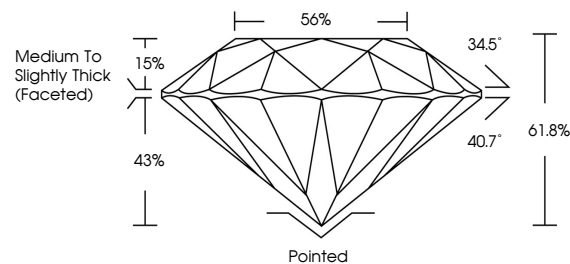
Carat Weight 11.02 CARATS Color Grade E Clarity Grade VVS 2 Cut Grade IDEAL

ADDITIONAL GRADING INFORMATION

Polish EXCELLENT Symmetry EXCELLENT Fluorescence NONE Inscription(s) LG720597394

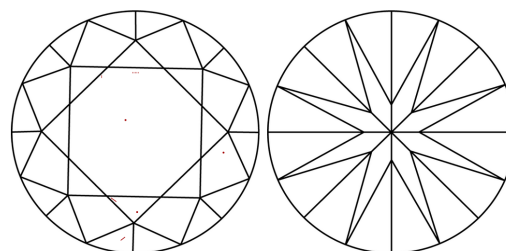
Comments: HEARTS & ARROWS This Laboratory Grown Diamond was created by Chemical Vapor Deposition (CVD) growth process. Type IIa

PROPORTIONS



Sample Image Used

CLARITY CHARACTERISTICS



KEY TO SYMBOLS

Red symbols indicate internal characteristics. Green symbols indicate external characteristics.



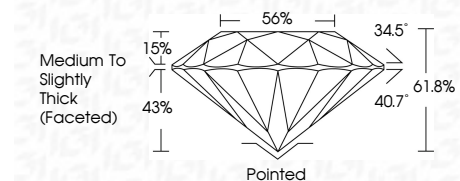
www.igi.org

COLOR

D E F G H I J Faint Very Light Light

CLARITY

IF VVS 1-2 VS 1-2 SI 1-2 I 1-3 Internally Flawless Very Very Slightly Included Very Slightly Included Slightly Included Included



ADDITIONAL GRADING INFORMATION

Polish EXCELLENT Symmetry EXCELLENT Fluorescence NONE Inscription(s) LG720597394 Comments: HEARTS & ARROWS This Laboratory Grown Diamond was created by Chemical Vapor Deposition (CVD) growth process. Type IIa



July 8, 2025 IGI Report No LG720597394 ROUND BRILLIANT 14.24 - 14.27 X 8.80 MM 11.02 CARATS E VVS 2 IDEAL 61.8% 56% Medium To Slightly Thick (Faceted) Pointed EXCELLENT EXCELLENT NONE NONE LG720597394 Comments: HEARTS & ARROWS This Laboratory Grown Diamond was created by Chemical Vapor Deposition (CVD) growth process. Type IIa