



ELECTRONIC COPY

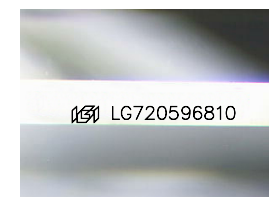
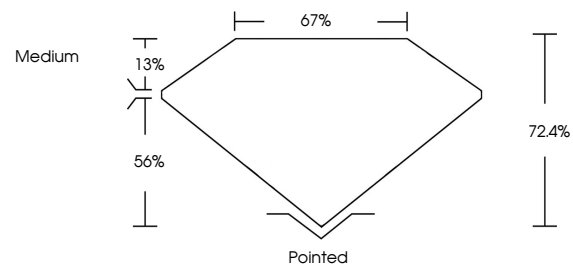
LABORATORY GROWN DIAMOND REPORT

July 10, 2025  
IGI Report Number LG720596810  
Description LABORATORY GROWN DIAMOND  
Shape and Cutting Style PRINCESS CUT  
Measurements 5.59 X 5.47 X 3.96 MM  
**GRADING RESULTS**  
Carat Weight 1.05 CARAT  
Color Grade D  
Clarity Grade VVS 2

ADDITIONAL GRADING INFORMATION

Polish EXCELLENT  
Symmetry EXCELLENT  
Fluorescence NONE  
Inscription(s) IGI LG720596810  
Comments: This Laboratory Grown Diamond was created by Chemical Vapor Deposition (CVD) growth process.  
Type IIa

PROPORTIONS



Sample Image Used

COLOR

D E F G H I J Faint Very Light Light

CLARITY

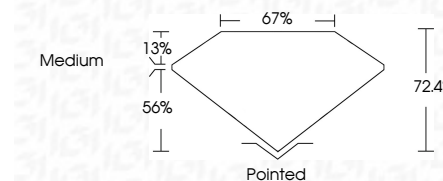
IF WS<sup>1-2</sup> VS<sup>1-2</sup> SI<sup>1-2</sup> I<sup>1-3</sup>  
Internally Flawless Very Very Slightly Included Very Slightly Included Slightly Included Included



July 10, 2025  
IGI Report Number LG720596810  
Description LABORATORY GROWN DIAMOND  
Shape and Cutting Style PRINCESS CUT  
Measurements 5.59 X 5.47 X 3.96 MM  
**GRADING RESULTS**  
Carat Weight 1.05 CARAT  
Color Grade D  
Clarity Grade VVS 2

ADDITIONAL GRADING INFORMATION

Polish EXCELLENT  
Symmetry EXCELLENT  
Fluorescence NONE  
Inscription(s) IGI LG720596810  
Comments: This Laboratory Grown Diamond was created by Chemical Vapor Deposition (CVD) growth process.  
Type IIa



July 10, 2025  
IGI Report No LG720596810  
PRINCESS CUT  
1.05 CARAT  
D  
5.59 X 5.47 X 3.96 MM  
Carat Weight  
Color Grade  
Clarity Grade  
Depth  
Table  
Girdle  
Medium  
Pointed  
EXCELLENT  
EXCELLENT  
NONE  
IGI LG720596810  
Inscription(s)  
Comments: This Laboratory Grown Diamond was created by Chemical Vapor Deposition (CVD) growth process.  
Type IIa