



**ELECTRONIC COPY**

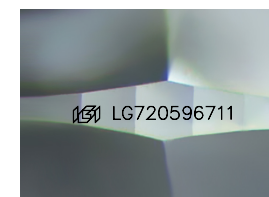
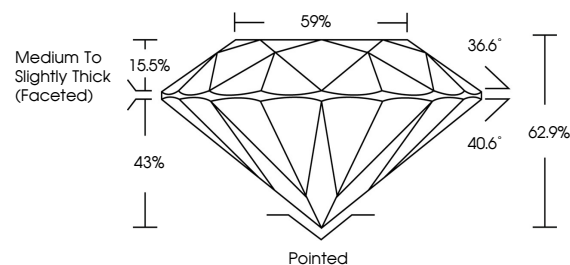
LG720596711  
Report verification at [igi.org](http://igi.org)



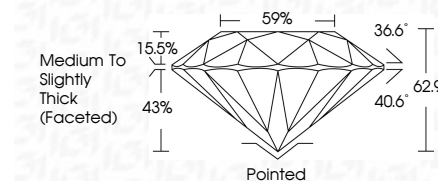
July 15, 2025  
IGI Report Number **LG720596711**  
Description **LABORATORY GROWN DIAMOND**  
Shape and Cutting Style **ROUND BRILLIANT**  
Measurements **8.00 - 8.06 X 5.05 MM**  
**GRADING RESULTS**  
Carat Weight **2.07 CARATS**  
Color Grade **FANCY VIVID GREEN**  
Clarity Grade **VS 1**  
Cut Grade **EXCELLENT**

July 15, 2025  
IGI Report Number **LG720596711**  
Description **LABORATORY GROWN DIAMOND**  
Shape and Cutting Style **ROUND BRILLIANT**  
Measurements **8.00 - 8.06 X 5.05 MM**  
**GRADING RESULTS**  
Carat Weight **2.07 CARATS**  
Color Grade **FANCY VIVID GREEN**  
Clarity Grade **VS 1**  
Cut Grade **EXCELLENT**

**PROPORTIONS**



Sample Image Used



**ADDITIONAL GRADING INFORMATION**

Polish **EXCELLENT**  
Symmetry **EXCELLENT**  
Fluorescence **NONE**  
Inscription(s) **IGI LG720596711**

Comments: This Laboratory Grown Diamond was created by Chemical Vapor Deposition (CVD) growth process.  
Indications of post-growth treatment.

**COLOR**

D E F G H I J Faint Very Light Light

**CLARITY**

IF	VS <sup>1-2</sup>	VS <sup>1-2</sup>	SI <sup>1-2</sup>	I <sup>1-3</sup>
Internally Flawless	Very Very Slightly Included	Very Slightly Included	Slightly Included	Included

**ADDITIONAL GRADING INFORMATION**

Polish **EXCELLENT**  
Symmetry **EXCELLENT**  
Fluorescence **NONE**  
Inscription(s) **IGI LG720596711**  
Comments: This Laboratory Grown Diamond was created by Chemical Vapor Deposition (CVD) growth process.  
Indications of post-growth treatment.



July 15, 2025  
IGI Report No **LG720596711**  
**ROUND BRILLIANT**  
**8.00 - 8.06 X 5.05 MM**  
Carat Weight **2.07 CARATS**  
Color Grade **FANCY VIVID GREEN**  
Clarity Grade **VS 1**  
Cut Grade **EXCELLENT**  
Depth **62.9%**  
Table **59%**  
Girdle **Medium To Slightly Thick (Faceted)**  
Culet **Pointed**  
Polish **EXCELLENT**  
Symmetry **EXCELLENT**  
Fluorescence **NONE**  
Inscriptions(s) **IGI LG720596711**  
Comments: This Laboratory Grown Diamond was created by Chemical Vapor Deposition (CVD) growth process.  
Indications of post-growth treatment.