



ELECTRONIC COPY

LABORATORY GROWN DIAMOND REPORT

| | |
|-------------------------|--------------------------|
| July 15, 2025 | |
| IGI Report Number | LG720596703 |
| Description | LABORATORY GROWN DIAMOND |
| Shape and Cutting Style | ROUND BRILLIANT |
| Measurements | 7.90 - 7.94 X 4.95 MM |
| GRADING RESULTS | |
| Carat Weight | 2.01 CARATS |
| Color Grade | FANCY VIVID GREEN |
| Clarity Grade | VS 1 |
| Cut Grade | VERY GOOD |

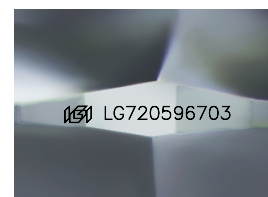
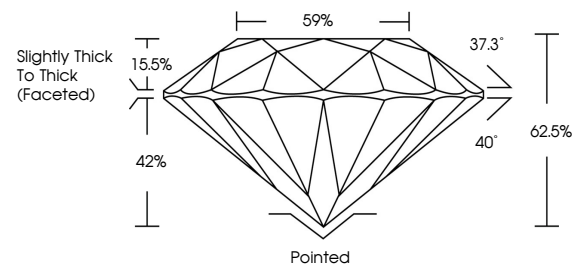
ADDITIONAL GRADING INFORMATION

| | |
|----------------|-----------------|
| Polish | EXCELLENT |
| Symmetry | EXCELLENT |
| Fluorescence | NONE |
| Inscription(s) | 151 LG720596703 |

Comments: This Laboratory Grown Diamond was created by Chemical Vapor Deposition (CVD) growth process.
Indications of post-growth treatment.

LG720596703
Report verification at igi.org

PROPORTIONS



Sample Image Used

COLOR

D E F G H I J Faint Very Light Light

CLARITY

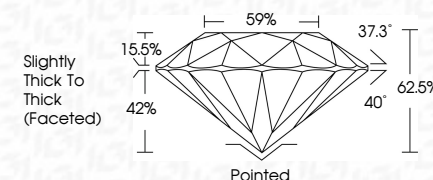
IF VS¹⁻² VS¹⁻² S¹⁻² |¹⁻³

| | | | | |
|------------------------|--------------------------------|---------------------------|----------------------|----------|
| Internally Flawless | Very Very Slightly Included | Very Slightly Included | Slightly Included | Included |
|------------------------|--------------------------------|---------------------------|----------------------|----------|

LABORATORY GROWN DIAMOND REPORT



| | |
|-------------------------|--------------------------|
| July 15, 2025 | |
| IGI Report Number | LG720596703 |
| Description | LABORATORY GROWN DIAMOND |
| Shape and Cutting Style | ROUND BRILLIANT |
| Measurements | 7.90 - 7.94 X 4.95 MM |
| GRADING RESULTS | |
| Carat Weight | 2.01 CARATS |
| Color Grade | FANCY VIVID GREEN |
| Clarity Grade | VS 1 |
| Cut Grade | VERY GOOD |



ADDITIONAL GRADING INFORMATION

| | |
|----------------|---|
| Polish | EXCELLENT |
| Symmetry | EXCELLENT |
| Fluorescence | NONE |
| Inscription(s) |  LG720596703 |

Comments: This Laboratory Grown Diamond was created by Chemical Vapor Deposition (CVD) growth process.
Indications of post-growth treatment.



© IGI 2020, International Gemological Institute

FD - 10 20



THIS DOCUMENT WAS PRODUCED WITH THE FOLLOWING SECURITY MEASURES: SPECIAL DOCUMENT PAPER, INK SCREENS, WATERMARK, BACKGROUND DESIGNS, HOLOGRAM AND OTHER SECURITY FEATURES NOT LISTED AND DO EXCEED DOCUMENT SECURITY INDUSTRY GUIDELINES

www.igi.org

July 15, 2025
GI Report No LG720596703
ROUND BRILLIANT

| | | |
|-----------------------|-------------------------|--|
| 9.90 - 7.94 X 4.95 MM | 2.01 CARATS | |
| Carat Weight | FANCY VIVID GREEN | |
| Color Grade | VS 1 | |
| Clarity Grade | VERY GOOD | |
| Cut Grade | 62.0% | |
| Depth | 59% | |
| Table | Slightly Thick to Thick | |
| Girdle | (Faceted) | |
| Culet | Pointed | |
| Polish | EXCELLENT | |
| Symmetry | EXCELLENT | |
| Fluorescence | NONE | |
| Identification | gem 1 C770562703 | |

Comments:
This Laboratory Grown Diamond was created by Chemical Vapor Deposition (CVD) growth process.
indications of post-growth treatment