



ELECTRONIC COPY

LG720589135
Report verification at igi.org



July 19, 2025
IGI Report Number LG720589135
Description LABORATORY GROWN DIAMOND
Shape and Cutting Style PRINCESS CUT
Measurements 9.74 X 9.66 X 6.88 MM
GRADING RESULTS
Carat Weight 6.01 CARATS
Color Grade FANCY INTENSE YELLOW
Clarity Grade VS 1

LABORATORY GROWN DIAMOND REPORT

July 19, 2025
IGI Report Number LG720589135
Description LABORATORY GROWN DIAMOND
Shape and Cutting Style PRINCESS CUT
Measurements 9.74 X 9.66 X 6.88 MM

GRADING RESULTS

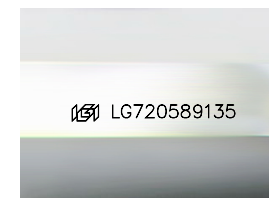
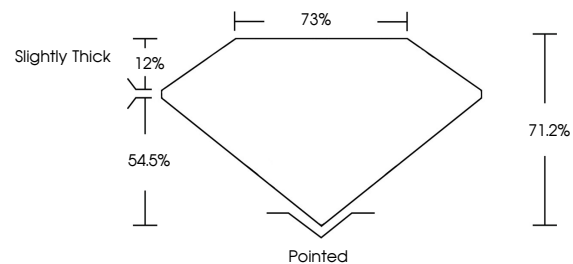
Carat Weight 6.01 CARATS
Color Grade FANCY INTENSE YELLOW
Clarity Grade VS 1

ADDITIONAL GRADING INFORMATION

Polish EXCELLENT
Symmetry EXCELLENT
Fluorescence NONE
Inscription(s) IGI LG720589135

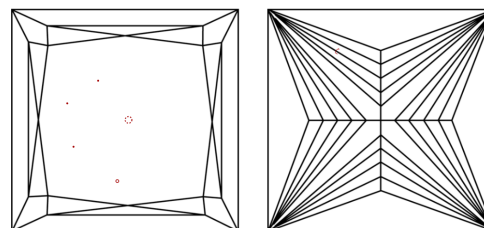
Comments: This Laboratory Grown Diamond was created by Chemical Vapor Deposition (CVD) growth process.

PROPORTIONS



Sample Image Used

CLARITY CHARACTERISTICS



KEY TO SYMBOLS

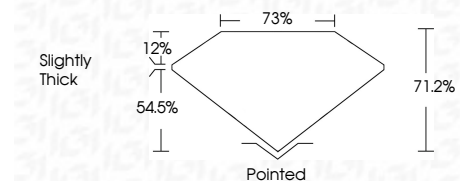
Red symbols indicate internal characteristics.
Green symbols indicate external characteristics.

COLOR

D E F G H I J Faint Very Light Light

CLARITY

IF WS 1-2 VS 1-2 SI 1-2 I 1-3
Internally Flawless Very Very Slightly Included Very Slightly Included Slightly Included Included



ADDITIONAL GRADING INFORMATION

Polish EXCELLENT
Symmetry EXCELLENT
Fluorescence NONE
Inscription(s) IGI LG720589135
Comments: This Laboratory Grown Diamond was created by Chemical Vapor Deposition (CVD) growth process.



July 19, 2025
IGI Report No LG720589135
PRINCESS CUT
6.01 CARATS
9.74 X 9.66 X 6.88 MM
FANCY INTENSE YELLOW
VS 1
71.2%
75%
Slightly Thick
Pointed
EXCELLENT
EXCELLENT
NONE
IGI LG720589135
Comments: This Laboratory Grown Diamond was created by Chemical Vapor Deposition (CVD) growth process.