



ELECTRONIC COPY

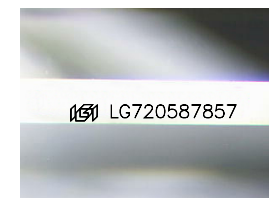
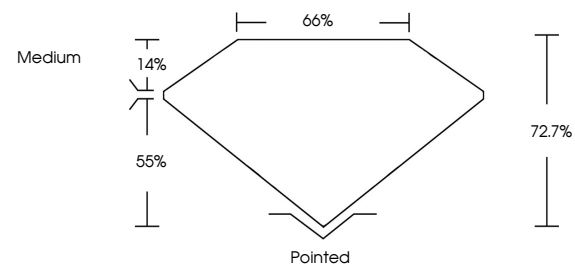
LG720587857
Report verification at igi.org



July 16, 2025
IGI Report Number **LG720587857**
Description **LABORATORY GROWN DIAMOND**
Shape and Cutting Style **PRINCESS CUT**
Measurements **10.50 X 10.07 X 7.32 MM**
GRADING RESULTS
Carat Weight **7.05 CARATS**
Color Grade **FANCY INTENSE PINK**
Clarity Grade **VS 1**

July 16, 2025
IGI Report Number **LG720587857**
Description **LABORATORY GROWN DIAMOND**
Shape and Cutting Style **PRINCESS CUT**
Measurements **10.50 X 10.07 X 7.32 MM**

PROPORTIONS

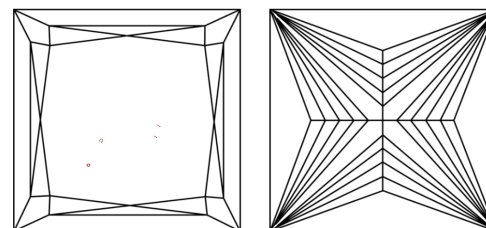


Sample Image Used

GRADING RESULTS

Carat Weight **7.05 CARATS**
Color Grade **FANCY INTENSE PINK**
Clarity Grade **VS 1**

CLARITY CHARACTERISTICS



KEY TO SYMBOLS

Red symbols indicate internal characteristics.
Green symbols indicate external characteristics.

ADDITIONAL GRADING INFORMATION

Polish **EXCELLENT**
Symmetry **EXCELLENT**
Fluorescence **STRONG**
Inscription(s) **IGI LG720587857**

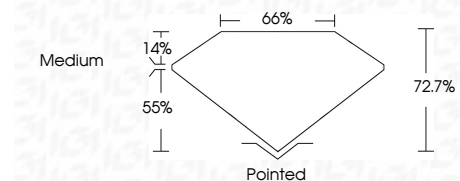
Comments: This Laboratory Grown Diamond was created by Chemical Vapor Deposition (CVD) growth process.
Indications of post-growth treatment.

COLOR

D E F G H I J Faint Very Light Light

CLARITY

IF	VS ¹⁻²	VS ¹⁻²	SI ¹⁻²	I ¹⁻³
Internally Flawless	Very Very Slightly Included	Very Slightly Included	Slightly Included	Included



ADDITIONAL GRADING INFORMATION

Polish **EXCELLENT**
Symmetry **EXCELLENT**
Fluorescence **STRONG**
Inscription(s) **IGI LG720587857**
Comments: This Laboratory Grown Diamond was created by Chemical Vapor Deposition (CVD) growth process.
Indications of post-growth treatment.



July 16, 2025
IGI Report No **LG720587857**
PRINCESS CUT
7.05 CARATS
Carat Weight
Color Grade **FANCY INTENSE PINK**
Clarity Grade **VS 1**
Depth **72.7%**
Table **66%**
Girdle **Medium**
Culet **Pointed**
Polish **EXCELLENT**
Symmetry **EXCELLENT**
Fluorescence **STRONG**
Inscription(s) **IGI LG720587857**
Comments: This Laboratory Grown Diamond was created by Chemical Vapor Deposition (CVD) growth process.
Indications of post-growth treatment.