



**ELECTRONIC COPY**

LG720587804  
Report verification at igi.org



July 22, 2025

IGI Report Number **LG720587804**

Description **LABORATORY GROWN DIAMOND**

Shape and Cutting Style **SQUARE CUSHION MODIFIED  
BRILLIANT**

Measurements **12.89 X 12.51 X 7.85 MM**

**GRADING RESULTS**

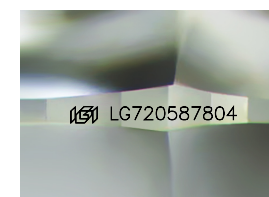
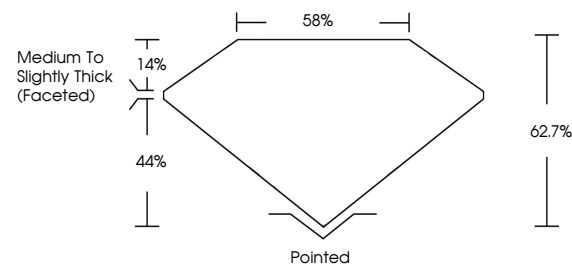
Carat Weight **9.68 CARATS**

Color Grade **F**

Clarity Grade **VVS 2**

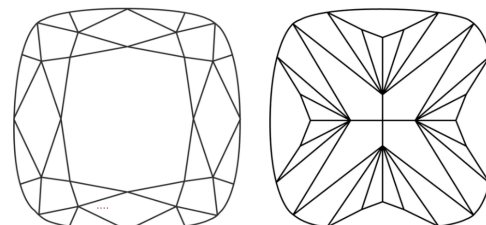
Cut Grade **EXCELLENT**

**PROPORTIONS**



Sample Image Used

**CLARITY CHARACTERISTICS**



**KEY TO SYMBOLS**

Red symbols indicate internal characteristics.  
Green symbols indicate external characteristics.

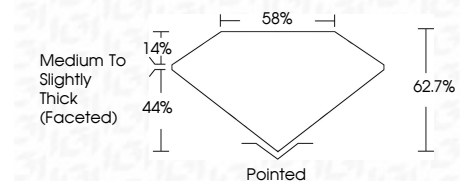
**COLOR**

D E F G H I J Faint Very Light Light

**CLARITY**

IF VVS<sup>1-2</sup> VS<sup>1-2</sup> SI<sup>1-2</sup> I<sup>1-3</sup>

Internally Flawless Very Very Slightly Included Very Slightly Included Slightly Included Included



**ADDITIONAL GRADING INFORMATION**

Polish **EXCELLENT**

Symmetry **EXCELLENT**

Fluorescence **NONE**

Inscription(s) **IGI LG720587804**

Comments: As Grown - No indication of post-growth treatment.

This Laboratory Grown Diamond was created by High Pressure High Temperature (HPHT) growth process. Type II



**IGI**



July 22, 2025	IGI Report No LG720587804	SQUARE CUSHION MODIFIED BRILLIANT	12.89 X 12.51 X 7.85 MM	9.68 CARATS	F	VVS 2	EXCELLENT	62.7%	58%	Medium To Slightly Thick (Faceted)	Pointed	EXCELLENT	EXCELLENT	NONE	IGI LG720587804
				Carat Weight	Color Grade	Clarity Grade	Cut Grade	Depth	Table	Girdle	Culet	Polish	Symmetry	Fluorescence	Inscription(s)

Comments: As Grown - No indication of post-growth treatment. This Laboratory Grown Diamond was created by High Pressure High Temperature (HPHT) growth process. Type II