



ELECTRONIC COPY

LG720582341
Report verification at igi.org



July 29, 2025
IGI Report Number **LG720582341**
Description **LABORATORY GROWN DIAMOND**
Shape and Cutting Style **ROUND BRILLIANT**
Measurements **9.73 - 9.78 X 6.01 MM**
GRADING RESULTS
Carat Weight **3.53 CARATS**
Color Grade **FANCY INTENSE YELLOW**
Clarity Grade **VS 2**
Cut Grade **IDEAL**

LABORATORY GROWN DIAMOND REPORT

July 29, 2025
IGI Report Number **LG720582341**
Description **LABORATORY GROWN DIAMOND**
Shape and Cutting Style **ROUND BRILLIANT**
Measurements **9.73 - 9.78 X 6.01 MM**

GRADING RESULTS

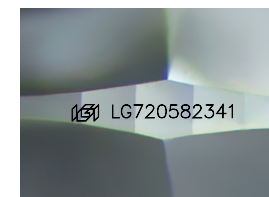
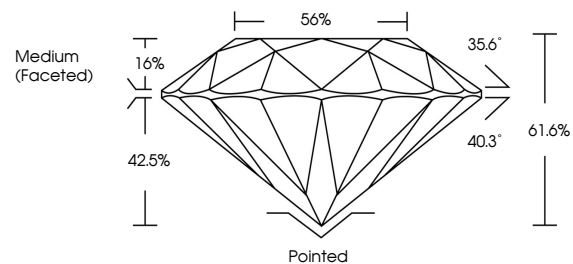
Carat Weight **3.53 CARATS**
Color Grade **FANCY INTENSE YELLOW**
Clarity Grade **VS 2**
Cut Grade **IDEAL**

ADDITIONAL GRADING INFORMATION

Polish **EXCELLENT**
Symmetry **EXCELLENT**
Fluorescence **NONE**
Inscription(s) **IGI LG720582341**

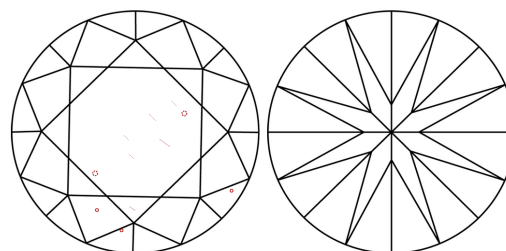
Comments: This Laboratory Grown Diamond was created by Chemical Vapor Deposition (CVD) growth process.

PROPORTIONS



Sample Image Used

CLARITY CHARACTERISTICS



KEY TO SYMBOLS

Red symbols indicate internal characteristics.
Green symbols indicate external characteristics.

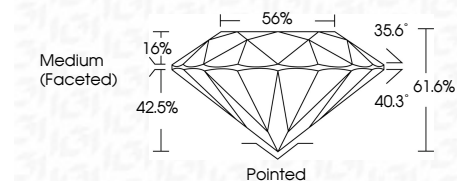
COLOR

D E F G H I J Faint Very Light Light

CLARITY

IF WS¹⁻² VS¹⁻² SI¹⁻² I¹⁻³

Internally Flawless Very Very Slightly Included Very Slightly Included Slightly Included Included



ADDITIONAL GRADING INFORMATION

Polish **EXCELLENT**
Symmetry **EXCELLENT**
Fluorescence **NONE**
Inscription(s) **IGI LG720582341**
Comments: This Laboratory Grown Diamond was created by Chemical Vapor Deposition (CVD) growth process.



July 29, 2025
IGI Report No LG720582341
ROUND BRILLIANT
9.73 - 9.78 X 6.01 MM
3.53 CARATS
FANCY INTENSE YELLOW
VS 2
IDEAL
61.6%
56%
Medium (Faceted)
Pointed
EXCELLENT
EXCELLENT
NONE
IGI LG720582341
Comments: This Laboratory Grown Diamond was created by Chemical Vapor Deposition (CVD) growth process.