



**ELECTRONIC COPY**

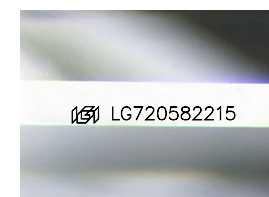
LG720582215  
Report verification at igi.org



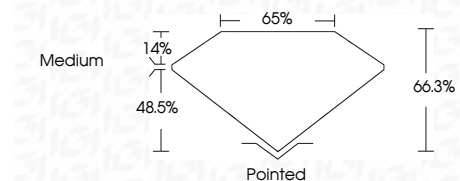
July 24, 2025  
IGI Report Number **LG720582215**  
Description **LABORATORY GROWN DIAMOND**  
Shape and Cutting Style **EMERALD CUT**  
Measurements **10.11 X 6.62 X 4.39 MM**

**GRADING RESULTS**

Carat Weight **3.03 CARATS**  
Color Grade **D**  
Clarity Grade **VS 1**



Sample Image Used



**ADDITIONAL GRADING INFORMATION**

Polish **EXCELLENT**  
Symmetry **EXCELLENT**  
Fluorescence **NONE**  
Inscription(s) **IGI LG720582215**  
Comments: This Laboratory Grown Diamond was created by Chemical Vapor Deposition (CVD) growth process. Type IIa



**IGI**

July 24, 2025  
IGI Report No LG720582215  
**EMERALD CUT**  
3.03 CARATS  
D  
3.03 CARATS  
D  
3.03 CARATS  
D  
10.11 X 6.62 X 4.39 MM  
Color Grade  
D  
Clarity Grade  
VS 1  
Table  
66.3%  
Depth  
48.5%  
Girdle  
Medium  
Pointed  
EXCELLENT  
EXCELLENT  
NONE  
IGI LG720582215  
Comments: This Laboratory Grown Diamond was created by Chemical Vapor Deposition (CVD) growth process. Type IIa

July 24, 2025  
IGI Report Number **LG720582215**  
Description **LABORATORY GROWN DIAMOND**  
Shape and Cutting Style **EMERALD CUT**  
Measurements **10.11 X 6.62 X 4.39 MM**

**GRADING RESULTS**

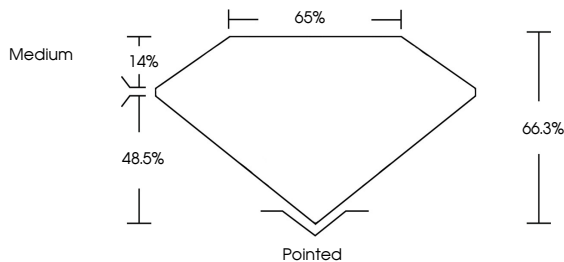
Carat Weight **3.03 CARATS**  
Color Grade **D**  
Clarity Grade **VS 1**

**ADDITIONAL GRADING INFORMATION**

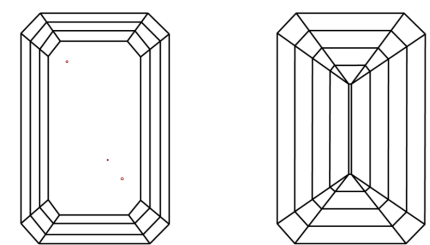
Polish **EXCELLENT**  
Symmetry **EXCELLENT**  
Fluorescence **NONE**  
Inscription(s) **IGI LG720582215**

Comments: This Laboratory Grown Diamond was created by Chemical Vapor Deposition (CVD) growth process. Type IIa

**PROPORTIONS**



**CLARITY CHARACTERISTICS**



**KEY TO SYMBOLS**

Red symbols indicate internal characteristics.  
Green symbols indicate external characteristics.

**COLOR**

D E F G H I J Faint Very Light Light

**CLARITY**

IF WS<sup>1-2</sup> VS<sup>1-2</sup> SI<sup>1-2</sup> I<sup>1-3</sup>  
Internally Flawless Very Very Slightly Included Very Slightly Included Slightly Included Included

