



ELECTRONIC COPY

LG720581177
Report verification at igi.org



July 21, 2025

IGI Report Number **LG720581177**

Description **LABORATORY GROWN DIAMOND**

Shape and Cutting Style **PRINCESS CUT**

Measurements **11.96 X 11.53 X 7.83 MM**

GRADING RESULTS

Carat Weight **10.03 CARATS**

Color Grade **FANCY INTENSE PINK**

Clarity Grade **VS 1**

July 21, 2025

IGI Report Number **LG720581177**

Description **LABORATORY GROWN DIAMOND**

Shape and Cutting Style **PRINCESS CUT**

Measurements **11.96 X 11.53 X 7.83 MM**

GRADING RESULTS

Carat Weight **10.03 CARATS**

Color Grade **FANCY INTENSE PINK**

Clarity Grade **VS 1**

ADDITIONAL GRADING INFORMATION

Polish **VERY GOOD**

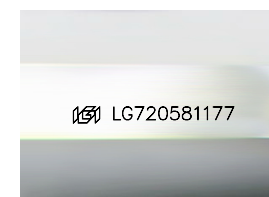
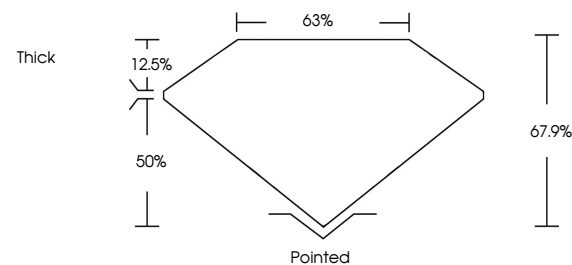
Symmetry **EXCELLENT**

Fluorescence **STRONG**

Inscription(s) **IGI LG720581177**

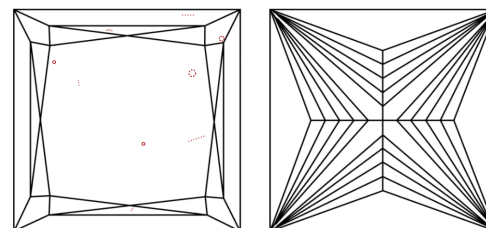
Comments: This Laboratory Grown Diamond was created by Chemical Vapor Deposition (CVD) growth process. Indications of post-growth treatment.

PROPORTIONS



Sample Image Used

CLARITY CHARACTERISTICS



KEY TO SYMBOLS

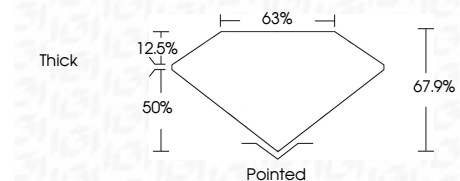
Red symbols indicate internal characteristics.
Green symbols indicate external characteristics.

COLOR

D E F G H I J Faint Very Light Light

CLARITY

IF	VS ¹⁻²	VS ¹⁻²	SI ¹⁻²	I ¹⁻³
Internally Flawless	Very Very Slightly Included	Very Slightly Included	Slightly Included	Included



ADDITIONAL GRADING INFORMATION

Polish **VERY GOOD**

Symmetry **EXCELLENT**

Fluorescence **STRONG**

Inscription(s) **IGI LG720581177**

Comments: This Laboratory Grown Diamond was created by Chemical Vapor Deposition (CVD) growth process. Indications of post-growth treatment.



July 21, 2025
IGI Report No LG720581177
PRINCESS CUT

10.03 CARATS
FANCY INTENSE PINK

VS 1
67.9%
63%
Thick

Pointed
VERY GOOD
EXCELLENT
STRONG
IGI LG720581177

Comments: This Laboratory Grown Diamond was created by Chemical Vapor Deposition (CVD) growth process. Indications of post-growth treatment.