



**ELECTRONIC COPY**

LG720580585  
Report verification at igi.org



July 11, 2025  
IGI Report Number **LG720580585**  
Description **LABORATORY GROWN DIAMOND**  
Shape and Cutting Style **ROUND ROSE CUT**  
Measurements **10.29 - 10.29 X 2.82 MM**  
**GRADING RESULTS**  
Carat Weight **2.43 CARATS**  
Color Grade **D**  
Clarity Grade **VVS 2**

July 11, 2025  
IGI Report Number **LG720580585**  
Description **LABORATORY GROWN DIAMOND**  
Shape and Cutting Style **ROUND ROSE CUT**  
Measurements **10.29 - 10.29 X 2.82 MM**

**GRADING RESULTS**

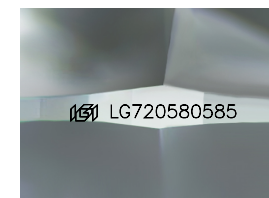
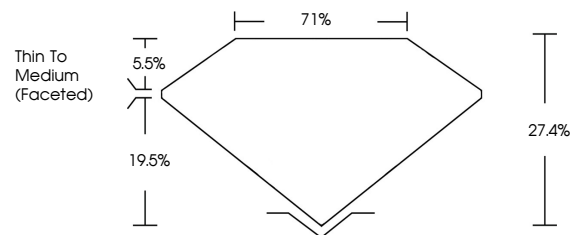
Carat Weight **2.43 CARATS**  
Color Grade **D**  
Clarity Grade **VVS 2**

**ADDITIONAL GRADING INFORMATION**

Polish **EXCELLENT**  
Symmetry **EXCELLENT**  
Fluorescence **NONE**  
Inscription(s) **(IGI) LG720580585**

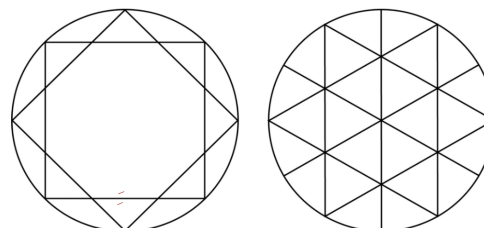
Comments: As Grown - No indication of post-growth treatment.  
This Laboratory Grown Diamond was created by High Pressure High Temperature (HPHT) growth process.  
Type II

**PROPORTIONS**



Sample Image Used

**CLARITY CHARACTERISTICS**



**KEY TO SYMBOLS**

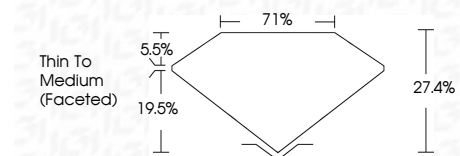
Red symbols indicate internal characteristics.  
Green symbols indicate external characteristics.

**COLOR**

D E F G H I J Faint Very Light Light

**CLARITY**

IF	WS <sup>1-2</sup>	VS <sup>1-2</sup>	SI <sup>1-2</sup>	I <sup>1-3</sup>
Internally Flawless	Very Very Slightly Included	Very Slightly Included	Slightly Included	Included



**ADDITIONAL GRADING INFORMATION**

Polish **EXCELLENT**  
Symmetry **EXCELLENT**  
Fluorescence **NONE**  
Inscription(s) **(IGI) LG720580585**  
Comments: As Grown - No indication of post-growth treatment.  
This Laboratory Grown Diamond was created by High Pressure High Temperature (HPHT) growth process.  
Type II



**IGI**

July 11, 2025  
IGI Report No LG720580585  
**ROUND ROSE CUT**  
10.29 - 10.29 X 2.82 MM  
Carat Weight **2.43 CARATS**  
Color Grade **D**  
Clarity Grade **VVS 2**  
Depth **27.4%**  
Table **71%**  
Girdle **Thin To Medium (Faceted)**  
Culet **EXCELLENT**  
Polish **EXCELLENT**  
Symmetry **EXCELLENT**  
Fluorescence **NONE**  
Inscription(s) **(IGI) LG720580585**

Comments: As Grown - No indication of post-growth treatment.  
This Laboratory Grown Diamond was created by High Pressure High Temperature (HPHT) growth process.  
Type II