



ELECTRONIC COPY

LG720578938
Report verification at igi.org



July 14, 2025
IGI Report Number **LG720578938**
Description **LABORATORY GROWN DIAMOND**
Shape and Cutting Style **ROUND BRILLIANT**
Measurements **8.21 - 8.26 X 4.94 MM**
GRADING RESULTS
Carat Weight **2.05 CARATS**
Color Grade **FANCY INTENSE PINK**
Clarity Grade **VVS 2**
Cut Grade **IDEAL**

July 14, 2025
IGI Report Number **LG720578938**
Description **LABORATORY GROWN DIAMOND**
Shape and Cutting Style **ROUND BRILLIANT**
Measurements **8.21 - 8.26 X 4.94 MM**

GRADING RESULTS

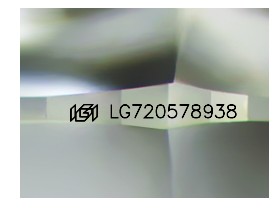
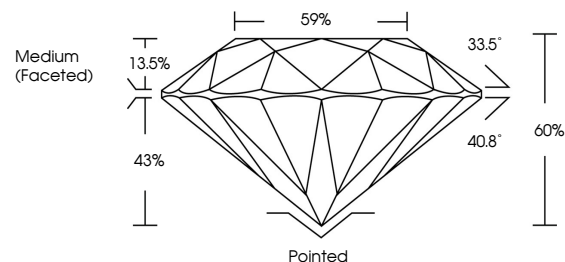
Carat Weight **2.05 CARATS**
Color Grade **FANCY INTENSE PINK**
Clarity Grade **VVS 2**
Cut Grade **IDEAL**

ADDITIONAL GRADING INFORMATION

Polish **EXCELLENT**
Symmetry **EXCELLENT**
Fluorescence **STRONG**
Inscription(s) **LG720578938**

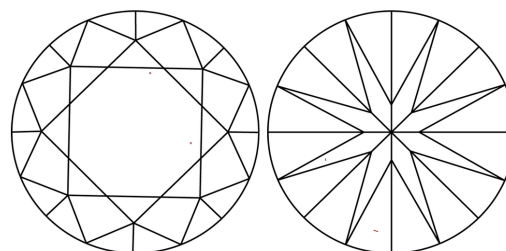
Comments: This Laboratory Grown Diamond was created by Chemical Vapor Deposition (CVD) growth process.
Indications of post-growth treatment.

PROPORTIONS



Sample Image Used

CLARITY CHARACTERISTICS



KEY TO SYMBOLS

Red symbols indicate internal characteristics.
Green symbols indicate external characteristics.

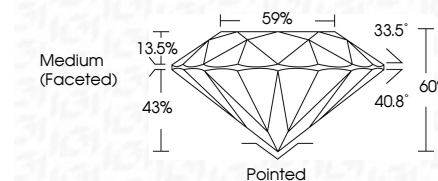
COLOR

D E F G H I J Faint Very Light Light

CLARITY

IF WS¹⁻² VS¹⁻² SI¹⁻² I¹⁻³

Internally Flawless Very Very Slightly Included Very Slightly Included Slightly Included Included



ADDITIONAL GRADING INFORMATION

Polish **EXCELLENT**
Symmetry **EXCELLENT**
Fluorescence **STRONG**
Inscription(s) **LG720578938**
Comments: This Laboratory Grown Diamond was created by Chemical Vapor Deposition (CVD) growth process.
Indications of post-growth treatment.



IGI



July 14, 2025
IGI Report No **LG720578938**
ROUND BRILLIANT
8.21 - 8.26 X 4.94 MM
Carat Weight **2.05 CARATS**
Color Grade **FANCY INTENSE PINK**
Clarity Grade **VVS 2**
Depth **IDEAL**
Table **60%**
Girdle **59%**
Medium (Faceted)
Culet **Pointed**
Polish **EXCELLENT**
Symmetry **EXCELLENT**
Fluorescence **STRONG**
Inscription(s) **LG720578938**
Comments: This Laboratory Grown Diamond was created by Chemical Vapor Deposition (CVD) growth process.
Indications of post-growth treatment.